

## Summary

	Total	>125		125-100		99-51		50-25		<25		Inflammation	Degeneration
Allersode													
(ALR)	777			22	3%	723	93%	32	4%				
Cardio												3	4
Angina	19			1	5%	17	89%	1	5%			1	1
Block	14			2	14%	12	86%					1	
Blood Presure	64			4	6%	57	89%	3	5%			1	1
Cardio	28					27	96%	1	4%				
Circulation	16			1	6%	15	94%						
Heart	273			7	3%	245	90%	21	8%				2
Ischemia	4					3	75%	1	25%				
Sclerosis	3			1	33%	2	67%						
Digest												16	7
Absorp	42			1	2%	38	90%	3	7%				
Bile	16					13	81%	3	19%				
Colon	417	1	0%	17	4%	377	90%	22	5%			4	3
Digest	276			12	4%	246	89%	18	7%				
Enzyme	260			13	5%	234	90%	13	5%				
Flora	32			1	3%	27	84%	4	13%				
Gallbladder	92			4	4%	83	90%	5	5%				1
Gallstone	16			1	6%	15	94%						
Intestine	460			17	4%	422	92%	21	5%			2	2
Liver	416			15	4%	384	92%	17	4%			10	

Panc	141			6	4%	126	89%	9	6%				
Saliva	16					14	88%	2	13%				
Stomach	198			5	3%	185	93%	8	4%				
Sugar	108			3	3%	100	93%	5	5%				
Ulcer	59			1	2%	50	85%	8	14%				1
<b>Emotion</b>													
(FE)	535			16	3%	487	91%	32	6%				
Bach	39			2	5%	37	95%						
Chakra	53			2	4%	48	91%	3	6%				
Emotion	466			20	4%	423	91%	23	5%				
Meridian	93			4	4%	85	91%	4	4%				
<b>Immune</b>												<b>1</b>	<b>3</b>
Bacteria	224			3	1%	215	96%	6	3%				
Blood	414			16	4%	381	92%	17	4%			1	2
Congest	61			2	3%	54	89%	5	8%				
Fungus	113			7	6%	103	91%	3	3%				
Immune	292			20	7%	256	88%	16	5%				1
Lymph	91			6	7%	82	90%	3	3%				
Metal	63	2	3%	1	2%	58	92%	2	3%				
Pleo	31			1	3%	29	94%	1	3%				
Toxic	300			6	2%	284	95%	10	3%				
Virus	148			4	3%	137	93%	7	5%				
<b>Nutrition</b>													
Amino	97	1	1%	3	3%	87	90%	6	6%				

Mineral	248	1	0%	6	2%	228	92%	13	5%				
Nutri	169	1	1%	6	4%	156	92%	6	4%				
Vita	508			17	3%	472	93%	19	4%				
Respiration												4	
Lung	383			11	3%	351	92%	21	5%			3	
Pulmonary	18			1	6%	16	89%	1	6%				
Respiratory	98			5	5%	87	89%	6	6%			1	
Sinus	62			1	2%	57	92%	4	6%				
Urinary												2	
Bladder	209	1	0%	10	5%	183	88%	15	7%				
Cervix	6					6	100%						
Kidney	394	1	0%	17	4%	352	89%	24	6%			2	
Ovaries	16	1	6%			14	88%	1	6%				
Prostate	95	1	1%	8	8%	82	86%	4	4%				
Kidney Stones	43			3	7%	39	91%	1	2%				
Testes	11					10	91%	1	9%				
Uric	22					22	100%						
Uterus	39			1	3%	34	87%	4	10%				
Vagina	17			2	12%	14	82%	1	6%				

	Value	Highest Value Description
Allersode		
(ALR)	117	PENICILLIUM NOTATUER (ALR)   Can id systemic fungus or fungal immune weakness. ^

Cardio		
Angina	120	AQUILARIA - Chen xiang   Abdomen distension pain, for the anal retentive (bowel, colon, intestine). \ Ayu
Block	109	ARTERIOSCLEROSIS   Blocking of arteries, veins, from calcium cholesterol or other.
Blood Pressure	115	Capsicum & Garlic w, Parsley / Normalise Blood Pressure-Immune / Sunshine Tool Works
Cardio	92	Bromelain with co-enzyme Q10 (Co-Q10 ubiquinone) for cardiovascular (heart) and circulatory system/
Circulation	104	CIRCULATION MERIDIAN   This acupuncture meridian has shown reactivity, possible blockage.
Heart	123	4TH CHAKRA - HEART   A chakra reacts if it is over sensitive from use or if it ready to open. ]
Ischemia	88	CORONARY ISCHEMIA   Ids risk of heart attack or infarction.
Sclerosis	109	ARTERIOSCLEROSIS   Blocking of arteries, veins, from calcium cholesterol or other.
Digest		
Absorp	115	AMINO LIQUITROPHIC (DR)   Supplies amino acids, used for malabsorption or vegetarians.
Bile	87	BETA PLUS   Gallbladder support in case of insufficient bile production. BIOTICS E.N.B.
Colon	126	ALUMINUM METALLICUM   Acts on paralysis of intestinal (bowel, colon, intestine) muscles, dryness, wh
Digest	122	4034;Narayani 37 ACIDITY 30C Homeo mixture in all acid conditions ,digestion, skin, corrosive excretion:
Enzyme	123	MONOAMINE OXIDASE   Enzyme needed to control depression, use 30x for depression.
Flora	101	LAC DEFLOMATUM   Milk variation for homeopathic treatment of various conditions.
Gallbladder	109	ANTENNARIA   Cholagogue (liver) ids gallbladder disease, for longevity or premature aging.\ ]
Gallstone	104	#N/A
Intestine	120	AQUILARIA - Chen xiang   Abdomen distension pain, for the anal retentive (bowel, colon, intestine). \ Ayu
Liver	109	ANTENNARIA   Cholagogue (liver) ids gallbladder disease, for longevity or premature aging.\ ]
Panc	116	POTASSIUM CARBONATE   Ids potassium deficiency and pancreas disease. ]
Saliva	99	MUSCLE FACIAL SUPRAHYOID   Influence tongue and swallowing and saliva. sarscode \$ ]
Stomach	112	Gastric Inhibitory Polypeptide   (bowel, colon, intestine, stomach) GASTROINTESTINAL PEPTIDE ]
Sugar	116	FRUCTOSE   Fruit sugar stimulates hormone production and delays aging.
Ulcer	103	LUPUS   Auto immune disease with sun sensitivity, ulcerations of skin, blotches.

Emotion		
(FE)	112	(FE) PURPLE NIGHTSHADE   Soothing calm.
Bach	110	BACH FLOWER CERATO   Distrust of self, doubt one's abilities, foolishness. (FE)
Chakra	123	4TH CHAKRA - HEART   A chakra reacts if it is over sensitive from use or if it ready to open. ]
Emotion	120	SOPHORAE FLOS   For circulatory conditions, need to analyze emotions more. \ ]
Meridian	108	LYMPH MERIDIAN   This acupuncture meridian has shown reactivity, possible blockage.
Immune		
Bacteria	117	PASTERELLA   Bacteria found in diseased tissue of putrid flesh, highly virulent and destructive. @ ]
Blood	121	SEDA PASC   General sclerotic conditions, lead paralysis, localized neuralgia, low red blood cells, multiple
Congest	105	Fenugreek & Thyme / De congestant, Expectorant / Sunshine Tool Works
Fungus	121	HISTOPLASMOSIS 1   Fungus, can id systemic fungus or fungal immune weakness. ^
Immune	121	HISTOPLASMOSIS 1   Fungus, can id systemic fungus or fungal immune weakness. ^
Lymph	120	LYMPH - Sarcode & nosode combo   Ids problem with Lymph. D Nosode
Metal	134	ZINC CADMIUM SULFIDE   Biological Warfare Variations
Pleo	112	PLEO - Reb: Peyer's patches extract 4x   Immune stimulant, chronic inflammation bowels, leaky gut (colo
Toxic	115	FELINE LEUKEMIA VACCINE   Vaccine can produce blood toxicity in humans, exposition to cats.
Virus	101	Epstien Barr virus of emotional dyscontrol and transmitted viral codition 3 # ]
Nutrition		
Amino	127	RHODYMENIA PALMATA   Dulse, sea vegetable, for amino acid deficiency, weight loss , ids magnesium d
Mineral	126	ALUMINUM METALLICUM   Acts on paralysis of intestinal (bowel, colon, instestine) muscles, dryness, wh
Nutri	126	NUTRIMERE   Standard Process
Vita	123	FIGURE TONE   To lose weight. Natureplant - Ortomolecular Vitamin
Respiration		
Lung	112	ACUTE RESPIRATORY DISEASE - ARD   Undifferentiated, low O2 (lung), alkalosis, dyspnea, leucocytosis, fe
Pulmonary	100	PULMONARY EMPHYSEMA   Lung condition, distension, elasticity loss, alveoli rupture, labored breathing

Respiratory	112	ACUTE RESPIRATORY DISEASE - ARD   Undifferentiated, low O2 (lung), alkalosis, dyspnea, leucocytosis, fe
Sinus	107	SINUSITIS MAXILLARIS   Sarcodes & nosodes combo, ids problem.
Urinary		
Bladder	129	BAROSMA BETULINA   For genito urinary system (kidney, bladder, urethra), prostate, ovaries. \ ]
Cervix	96	BLEND U: uterus/cervix/gonads, male/female support/Monastery of Herbs
Kidney	129	BAROSMA BETULINA   For genito urinary system (kidney, bladder, urethra), prostate, ovaries. \ ]
Ovaries	129	BAROSMA BETULINA   For genito urinary system (kidney, bladder, urethra), prostate, ovaries. \ ]
Prostate	129	BAROSMA BETULINA   For genito urinary system (kidney, bladder, urethra), prostate, ovaries. \ ]
Kidney Stones	120	KIDNEY STONE PHOSPHATE
Testes	87	TESTIS / TESTES DISEASE   }
Uric	99	SULPHURIC ACIDUM   Ids toxic exposure or acid metabolism, stinging stitching pains.
Uterus	110	CENTRAL INCISOR UPPER LEFT   TOOTH sarcodes
Vagina	109	TRICHOMONAS VAGINALIS   Flagylated protozoa parasite, common after surgery or pregnancy, asymptomatic

Toxicity	Blockage	Deficiency	Sensitivity	Imbalance
<b>1</b>	<b>17</b>	<b>22</b>	<b>1</b>	<b>16</b>
	2	1		
	1	7		
	1			
				1
1	11	13	1	13
	1			1
	1	1		1
<b>21</b>	<b>28</b>	<b>178</b>	<b>4</b>	<b>34</b>
		4		2
2	2	2		1
5	12	14	1	20
2	4	25		4
		26		
4		1		
		8	1	3
	1	1		
2	3	34		4
5	3	16		

	2	15		
		2		
1	1	13		
		8	2	
		9		
<b>42</b>	<b>1</b>	<b>87</b>	<b>10</b>	<b>20</b>
9		1		
2	1	32		1
		5		2
9				1
7		24	1	10
		8		1
4		3		
		2		
1		5	8	2
10		7	1	3

3		43	2	4
3		26	1	3
		1		1
		11		
		5	1	
10	16	78	2	11
1	5	22		2
3	7	36	2	5
1		1		
	1	10		3
1	3	4		1
1				
		5		
3				


urvedic ]

Biocare UK ]

ining, dread of evil, mineral. ]

s

urvedic ]

sclerosis, mental depression.

n intestine). ]

efficiency. \

ining, dread of evil, mineral. ]

ever, hypotension. ]

, husky cough, impairs heart action } ]

ever, hypotension. ]

matic in males. \*]



No	Value	Sub
1647	117	(ALR)
1609	116	(ALR)
5326	116	(ALR)
8264	115	(ALR)
854	114	(ALR)
1530	108	(ALR)
1501	106	(ALR)
1642	106	(ALR)
9453	106	(ALR)
5367	105	(ALR)
9456	104	(ALR)
9509	104	(ALR)
9560	104	(ALR)
870	103	(ALR)
1504	103	(ALR)
8423	103	(ALR)
1681	101	(ALR)
1526	100	(ALR)

1586	100	(ALR)
1672	100	(ALR)
8290	100	(ALR)
8394	100	(ALR)
188	50	(ALR)
1633	50	(ALR)
8307	50	(ALR)
9422	50	(ALR)
9569	50	(ALR)
367	49	(ALR)
861	49	(ALR)
1604	49	(ALR)
8209	49	(ALR)
8366	49	(ALR)
9385	49	(ALR)
9512	49	(ALR)
9522	48	(ALR)
1514	47	(ALR)
1561	47	(ALR)
9468	47	(ALR)
9477	47	(ALR)
6683	46	(ALR)
8393	46	(ALR)
8433	46	(ALR)
9400	46	(ALR)
9579	46	(ALR)
809	44	(ALR)

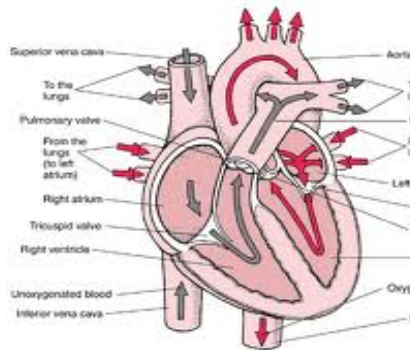
811	44	(ALR)
832	44	(ALR)
1516	44	(ALR)
841	43	(ALR)
816	42	(ALR)
8312	42	(ALR)
899	41	(ALR)
8345	40	(ALR)
1598	39	(ALR)



Description
PENICILLIUM NOTATUER (ALR)   Can id systemic fungus or fungal immune weakness. ^
LETTUCE (ALR)   Sensitivity can id excess testosterone, emotional remedy for sex disorders.
MILDEW   Can id systemic fungus or fungal immune weakness. ^ (ALR)
APPLE   Red delicious. Food Extract. (ALR)
LETTUCE   Allergy or sensitivity can id excess testosterone, emotional remedy for sex dysfunctions, good food. ]
BREWERS YEAST (ALR)   Contains lots of vitamins B.
ASPERGILLUS FUMIGATUS (ALR)   Can id systemic fungus or fungal immune weakness. ^
OLIVE - BLACK (ALR)   Can identify sexual weakness or frigidity.
POPLAR/homeopathic formula for allergy/Monastery of Herbs
GOAT'S MILK CHEESE   (ALR)
ROSE/homeopathic formula for allergy/Monastery of Herbs
PORK 1/homeopathic formula for allergy/Monastery of Herbs
DATE 1/homeopathic formula for allergy/Monastery of Herbs
PENICILLIUM (DIGATATUM)   Allergy or sensitivity appears on old food or mold, good food. ^ ]
ASPERGILLUS NIDULANS (ALR)   Can id systemic fungus or fungal immune weakness. ^
LIME   Pollen Extract (ALR)
SHELLFISH CRAB (ALR)   Sensitivity, emotional sexual insecurity, cholera, colic (bowel, colon, intestine), stroke (brain), skin. ]
BARLEY (ALR)   Alkaline food for excess acidity, helpul for digestion, demulcent, softens tissues.

GRASS, GOLDEN ROD (ALR)   Allergy sensitivity or toxic reaction, avoid and desensitize.
PEA POD (ALR)   Good for sulphur types and for allergic and immune sensitive patients.
CHOCOLATE (COCOA BEAN)   Food Extract (ALR)
CAT FUR   Epithelial Extract (ALR)
LACTUCA SATIVA   Lettuce, remedy for excess testosterone and baldness, good food. \ ]
NAVY BEANS (ALR)   Can identify immune weakness, contains lectins that stimulate the T-cells (thymus). ]
GRAPEFRUIT   Food Extract (ALR)
HUMAN HAIR 6/homeopathic formula for allergy/Monastery of Herbs
HADDOCK 1/homeopathic formula for allergy/Monastery of Herbs
ZINGIBER OFFICIN   Ginger, for digestion, morning sickness, respiration (lung), kidney failure, good food. \ ]
NUTMIX (BRAZIL)   Allergy or sensitivity, emotional remedy for vegetarian depression, good food.
HONEYDEW MELON (ALR)   Allergy or sensitivity.
CAFFEINATED SOFT DRINKS   Coca Cola, Pepsi Cola, Virgin Cola, etc.
TOMATO   Food Extract (ALR)
TEA 2/homeopathic formula for allergy/Monastery of Herbs
QUINOA RAPESEED OIL 1/homeopathic formula for allergy/Monastery of Herbs
SPICE MIX 2/homeopathic formula for allergy/Monastery of Herbs
ANIMAL EPITHELIA - CATTLE (ALR)   Can identify conflict fear of being hurt or left.
CYPRESS (ALR)   Allergy or sensitivity to the pollen, emotional remedy for nerves, excess coffee use.
GAS 3/homeopathic formula for allergy/Monastery of Herbs
NYSTATIN/homeopathic formula for allergy/Monastery of Herbs
ALLERGY PLEX N.29   Pollen and/or dust. GUNA s.r.l., MILANO (ALR)
STRAWDUST   Dust Extract (ALR)
POPLAR   Pollen Extract (ALR)
CANDIDA ALBLIC 5/homeopathic formula for allergy/Monastery of Herbs
ANIMAL DANGER S-14/homeopathic formula allergy/APEX ENERGETICS
CARROT   Excellent food for cancer risks, emotional remedy for long term regrets, good food.

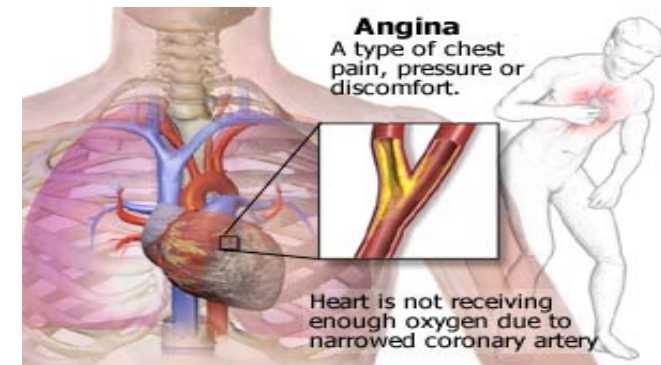
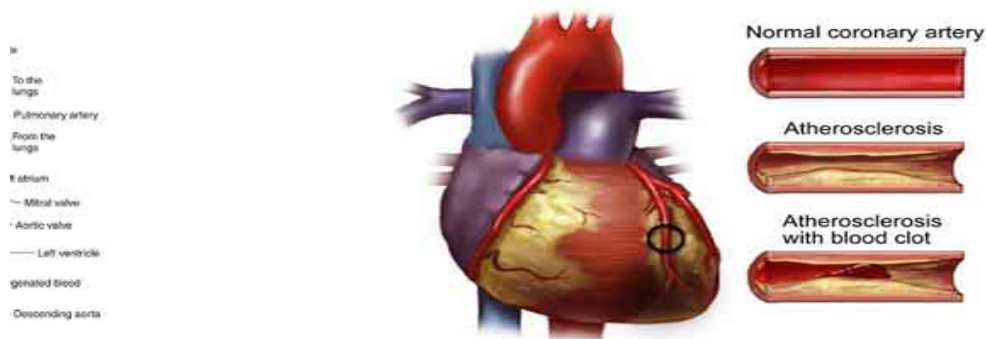
CATTLE   Allergy or sensitivity, emotional link to fear of killing things.
FLAX SEED   Allergy or sensitivity, can indicate fatty acid deficiency, emotional remedy for fear of pain. ]
ANIMAL EPTIHELIA - CAT (ALR)   Can id conflict fear of being hurt or left.
GRASS - ORCHARD   Allergy or sensitivity to pollen.
CHICKEN   Allergy or sensitivity, scratching from emotional cause, good food.
HOPS   Food Extract (ALR)
TOMATO   Allergy or sensitivity, hard on small intestine (bowel, colon), can irritate hypoglycemia, good food. ]
POTATO   Food Extract (ALR)
GRAPES - RED & WHITE (ALR)   Can also id blood toxicity.



No	Value	Sub
4363	120	Angina
5507	50	Angina
1759	109	Block
1950	109	Block
9262	115	Blood Presure
2481	111	Blood Presure
6387	108	Blood Presure
2526	103	Blood Presure
2499	47	Blood Presure
2823	44	Blood Presure
7224	42	Blood Presure
7224	42	Cardio

1728	<b>104</b>	Circulation
1735	<b>123</b>	Heart
6362	<b>111</b>	Heart
5577	<b>108</b>	Heart
9247	<b>106</b>	Heart
251	<b>102</b>	Heart
4754	<b>102</b>	Heart
5897	<b>100</b>	Heart
5507	<b>50</b>	Heart
8047	<b>50</b>	Heart
4657	<b>49</b>	Heart
5522	<b>49</b>	Heart
5656	<b>49</b>	Heart
8458	<b>49</b>	Heart
1724	<b>48</b>	Heart
3132	<b>48</b>	Heart
5826	<b>48</b>	Heart
7158	<b>48</b>	Heart
8053	<b>48</b>	Heart
1809	<b>47</b>	Heart
6244	<b>46</b>	Heart
76	<b>45</b>	Heart
7224	<b>42</b>	Heart

6925	<b>41</b>	Heart
5828	<b>39</b>	Heart
6784	<b>39</b>	Heart
107	<b>38</b>	Heart
6723	<b>36</b>	Heart
8060	<b>36</b>	Heart
5982	<b>48</b>	Ischemia
1759	<b>109</b>	Sclerosis



Description
AQUILARIA - Chen xiang   Abdomen distension pain, for the anal retentive (bowel, colon, intestine). \ Ayurvedic ]
ANGINA PECTORIS   Heart } DEDIC ]
ARTERIOSCLEROSIS   Blocking of arteries, veins, from calcium cholesterol or other.
HEMIPLEGIA DISEASE   Paralysis of one half of body, mostly caused by brain lesion or stroke blockage. \$ ]
Capsicum & Garlic w, Parsley / Normalise Blood Pressure-Immune / Sunshine Tool Works
ANGIOTENSIN III INHIBITOR   Bioactive peptide hormone related to stress and blood pressure.
SULFONYLUREAS   Lower blood pressure, used by diabetics (pancreas). ALO ]
VASOPRESSIN   Antidiuresis, blood pressure regulator, stimulates central nervous system. OPIOID PEPTIDE
Angiotensin-Converting Enzyme Inhibitor   Lows blood pressure or stress regulation disease.
HYPOADRENIA   Weak adrenals can cause fatigue, depression, sleep disorders, low blood pressure, etc.
NELSON HEART & CARDIOVASCULAR REMEDY   Ayurvedic
NELSON HEART & CARDIOVASCULAR REMEDY   Ayurvedic

CIRCULATION MERIDIAN   This acupuncture meridian has shown reactivity, possible blockage.
4TH CHAKRA - HEART   A chakra reacts if it is over sensitive from use or if it ready to open. ]
RESERPINE   Heart medicine. ALO
CARDIAC ARRHYTHMIA - IRREGULAR PULSE   Heart } DEDIC ]
Hawthorn Berries / Heart muscle / Sunshine Tool Works
PORIA   Oriental herb noted for effects on digestion and heart. \ ]
(FE) BORAGE   Disheartened.
PULMONARY EMPHYSEMA   Lung condition, distension, elasticity loss, alveoli rupture, labored breathing, husky cough, impairs heart action } ]
ANGINA PECTORIS   Heart } DEDIC ]
Stropheupas forte Tropf.   Heart palpitations. PASCOE NATURMEDIZIN
(FE) BANKSIA ROBUR   Enjoyment of an interest in life.
AORTIC PAIN - AORTALGIA   Heart. } DEDIC ]
ENDOCARDITIS   Heart } DEDIC ]
4TH CHAKRA WOMEN - HEART   Balances chakra. Prof. Orsatti, Milan - Italy ]
HEART MERIDIAN   This acupuncture meridian has shown reactivity, possible blockage.
SUMBULUS   Hysteria, nervous symptoms, cardiac (heart)disorders, numbness, insomnia of DT's. ]
MYOCARDIAL INFARCTION - HEART ATTACK   }
3rd MOLAR UPPER LEFT   TOOTH sarcode
Cor forte-Injektapas   Heart palpitations. PASCOE NATURMEDIZIN
HEART - Sarcode &nosode combo   Ids some heart problem.
ESTROGENS   Hormones to strengthen bones, decrease risk of heart attack. ALO
CHOKE CHERRIES   For cough, bronchitis (lung), weak heart, > night, > lying down. \ ]
NELSON HEART & CARDIOVASCULAR REMEDY   Ayurvedic

GM195 SHEN FU TANG (NORTHERN AUSTRALIA & U.S.)   Shock, heart failure, improves blood and microcirculation, increases myocardial contraction, improves liver function and increases immunity. ]
MYOCARDIAL INSUFFICIENCY - HEART FAILURE   }
IBERIS AMARA-COMPOSITUM   For cardiac (heart) irregularities. ]
CONVOLVULUS ARVENSIS   Cardiac (heart) conditions, diuretic (kidney, bladder, urethra), laxative (bowel, colon, intestine). \ ]
AURIN   Aurum mur-comp., gold drops, for cases of cardiac (heart) neurosis. ]
Brachiopas Tropf.   Heart palpitations. PASCOE NATURMEDIZIN
TRANSIENT ISCHEMIC ATTACK (TIA)   Stroke. Temporary interruption of blood flow to brain, often in carotid and vertebrobasilar arteries. } ]
ARTERIOSCLEROSIS   Blocking of arteries, veins, from calcium cholesterol or other.

Inflam mation	Degen eration	Toxicit y	Blocka ge	Deficie ncy	Sensiti vity	Imbala nce
	1					
1						
1			1			
			1	1		
			1	1		
	1			1		
1				1		
				1		
				1		
				1		
				1		
			1			

						1
			1			1
			1			
				1		1
				1		1
	1			1		
			1			1
			1			1
			1			
			1			
			1			1
			1			1
						1
	1			1		
				1		
				1		
				1		
				1		
				1		
				1		
			1	1		
			1	1		

						1
						1
		1			1	1
						1
				1		
			1			1
			1			1
			1	1		1



No	Value	Sub
918	115	Absorp
5607	49	Absorp
7883	49	Absorp
3196	41	Absorp
176	49	Bile
7314	49	Bile
1807	45	Bile
1361	126	Colon
4363	120	Colon
7805	118	Colon
1381	113	Colon
1761	112	Colon
2506	112	Colon
4982	112	Colon
617	111	Colon

987	110	Colon
1220	109	Colon
2505	108	Colon
3247	104	Colon
8106	103	Colon
8995	103	Colon
1890	102	Colon
6947	102	Colon
1681	101	Colon
2198	100	Colon
44	50	Colon
1900	50	Colon
9751	50	Colon
119	49	Colon
176	49	Colon
6941	49	Colon
7512	48	Colon
8992	48	Colon
1114	47	Colon
6700	47	Colon

1902	46	Colon
2127	46	Colon
3893	46	Colon
1807	45	Colon
1870	45	Colon
7617	45	Colon
2019	43	Colon
3896	43	Colon
899	41	Colon
7616	41	Colon
3352	40	Colon
107	38	Colon
4034	122	Digest
9264	114	Digest
784	113	Digest
3271	106	Digest
1425	105	Digest
1174	103	Digest
3295	103	Digest
6538	103	Digest
251	102	Digest
9757	101	Digest
1526	100	Digest
9045	100	Digest

5370	50	Digest
9751	50	Digest
54	49	Digest
367	49	Digest
1341	49	Digest
4423	48	Digest
7451	48	Digest
782	46	Digest
6911	46	Digest
9101	46	Digest
1256	45	Digest
1807	45	Digest
8260	45	Digest
4160	44	Digest
3896	43	Digest
216	42	Digest
3352	40	Digest
2973	38	Digest
535	123	Enzyme
784	113	Enzyme
1133	113	Enzyme
1259	113	Enzyme
3934	111	Enzyme
2648	110	Enzyme

1425	105	Enzyme
2725	104	Enzyme
591	101	Enzyme
1217	101	Enzyme
9036	101	Enzyme
9757	101	Enzyme
9045	100	Enzyme
2711	50	Enzyme
2726	50	Enzyme
3939	50	Enzyme
1421	49	Enzyme
9274	48	Enzyme
2499	47	Enzyme
584	44	Enzyme
1116	44	Enzyme
2690	43	Enzyme
3068	41	Enzyme
530	38	Enzyme
2973	38	Enzyme
1232	30	Enzyme
1153	101	Flora
8992	48	Flora
3893	46	Flora
7617	45	Flora
8977	41	Flora
24	109	Gallbladder
9728	108	Gallbladder

7466	105	Gallbladder
8106	103	Gallbladder
7314	49	Gallbladder
8120	49	Gallbladder
1807	45	Gallbladder
3358	45	Gallbladder
3196	41	Gallbladder
3247	104	Gallstone
4363	120	Intestine
7805	118	Intestine
1381	113	Intestine
1761	112	Intestine
2506	112	Intestine
4982	112	Intestine
617	111	Intestine
987	110	Intestine
1220	109	Intestine
2505	108	Intestine
3247	104	Intestine
8106	103	Intestine
8995	103	Intestine
1890	102	Intestine
6947	102	Intestine

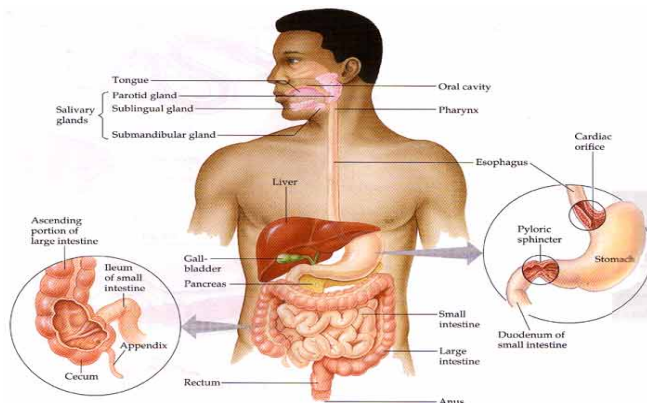
1681	101	Intestine
2198	100	Intestine
44	50	Intestine
1900	50	Intestine
119	49	Intestine
176	49	Intestine
6941	49	Intestine
7158	48	Intestine
8992	48	Intestine
1114	47	Intestine
6700	47	Intestine
7145	47	Intestine
1902	46	Intestine
2127	46	Intestine
3893	46	Intestine
1807	45	Intestine
1870	45	Intestine
7617	45	Intestine
2019	43	Intestine
3896	43	Intestine

899	41	Intestine
3352	40	Intestine
107	38	Intestine
24	109	Liver
4383	109	Liver
4399	109	Liver
792	108	Liver
9728	108	Liver
7084	106	Liver
1452	104	Liver
2049	104	Liver
7456	104	Liver
9218	104	Liver
8106	103	Liver
4401	101	Liver
9027	101	Liver
3158	100	Liver
3161	100	Liver
60	50	Liver
6912	50	Liver
176	49	Liver
6941	49	Liver
8120	49	Liver

6263	48	Liver
7667	48	Liver
3011	47	Liver
1807	45	Liver
3358	45	Liver
4160	44	Liver
969	42	Liver
6899	42	Liver
3196	41	Liver
6925	41	Liver
7320	41	Liver
8581	34	Liver
520	116	Panc
6387	108	Panc
155	103	Panc
8106	103	Panc
5618	102	Panc
246	100	Panc
131	49	Panc
176	49	Panc
6709	48	Panc

7359	<b>47</b>	Panc
9101	<b>46</b>	Panc
9105	<b>46</b>	Panc
6789	<b>45</b>	Panc
6825	<b>45</b>	Panc
7320	<b>41</b>	Panc
176	<b>49</b>	Saliva
341	<b>40</b>	Saliva
2506	<b>112</b>	Stomach
2722	<b>109</b>	Stomach
2505	<b>108</b>	Stomach
8106	<b>103</b>	Stomach
9757	<b>101</b>	Stomach
119	<b>49</b>	Stomach
959	<b>49</b>	Stomach
4423	<b>48</b>	Stomach
7512	<b>48</b>	Stomach
782	<b>46</b>	Stomach
9101	<b>46</b>	Stomach
1891	<b>45</b>	Stomach
1211	<b>39</b>	Stomach
576	<b>116</b>	Sugar
8580	<b>116</b>	Sugar

155	103	Sugar
7387	50	Sugar
407	47	Sugar
8781	47	Sugar
2375	41	Sugar
3068	41	Sugar
1985	103	Ulcer
5871	50	Ulcer
959	49	Ulcer
5542	48	Ulcer
1891	45	Ulcer
3896	43	Ulcer
269	40	Ulcer
1211	39	Ulcer
4978	31	Ulcer



Description	Inflam mation
AMINO LIQUITROPHIC (DR)   Supplies amino acids, used for malabsorption or vegetarians.	
TONI-FANCONI SYNDROME - RENAL GLYCOSURIA   The lack of renal tubular (kidney, bladder, urethra) reabsorptive capacity. } DEDIC ]	
HYDRASTIS   Water absorption. NETSMANN-Arzneimittel	
PHASEOLUS   Stimulates liver, gallbladder, promotes detox, overall nutrition stimulant, helps absorption and stimulation of nutrients, helps tissue to renew.	
IRIS VERSICOLOR   For thyroid, pancreas, saliva, intestine mucous membranes (bowel, colon), increases bile (liver). \ ]	
BETA TCP   Gallbladder support in case of too viscous bile. BIOTICS E.N.B.	
BILE   Emulsifies the digestive process in the small intestine made in liver stored in gallbladder recovered in large intestine (bowel, colon). ]	
ALUMINUM METALLICUM   Acts on paralysis of intestinal (bowel, colon, instestine) muscles, dryness, whining, dread of evil, mineral. ]	
AQUILARIA - Chen xiang   Abdomen distension pain, for the anal retentive (bowel, colon, intestine). \ Ayurvedic ]	
ARSENICUM ALBUM   Intestinal (bowel, colon, intestine) infections. NETSMANN-Arzneimittel ]	
AESCULUS GLABRA   Acts on lower bowel (colon, intestine), hemorrhoids, varicose veins, backache. \$ ]	
ANCYLOSTOMA TUBAEFORME   Worm, can id intestinal (bowel, colon, intestine) parasites of various kinds or sources. * ]	
Gastric Inhibitory Polypeptide   (bowel, colon, intestine, stomach) GASTROINTESTINAL PEPTIDE ]	
PLEO - Reb: Peyer's patches extract 4x   Immune stimulant, chronic inflammation bowels, leaky gut (colon intestine). ]	1
VERMEX (NV)   Detox remedy for intestinal (bowel, colon, intestine) parasites, worms. * ]	

VENA-H (DR)   Combo remedy for hemorrhoidal (bowel, colon, intestine) conditions. ]	
ANTIMONITE   (Raw form of antimony crude) Acts on intestinal (bowel, colon, intestine) mucosa, skin, child deliriums, fretful, peevish. ]	
GALANIN   For stomach and intestinal disease. (bowel, colon, intestine, stomach) GASTROINTESTINAL PEPTIDE ]	
DIOSOLRIA   Colic (bowel, colon, intestine), painful affections of abdominal and pelvic viscera, gallstone colic. ]	1
Gallopas Tropf.   Stomach, intestines (bowel, colon), pancreas, liver, gallbladder. PASCOE NATURMEDIZIN ]	1
Immunoguard intestinal (bowel, colon, intestine) immune complex/ with immunoglobulant concentrate FOS, GLA, Vitamin E, potassium ascorbate, Zinc citrate, lactobacillus bulgaricus/ Biocare UK ]	
DICROCOELIUM LANCEATUM   Worm, can id intestinal (bowel, colon, intestine) parasites of various kinds or sources. * ]	1
GM262 ZHI SHI, BING LANG, WU YAO   Constipation, abdominal bloating, abdominal pain from qi stagnation, paralytic ileus following abdominal surgery (bowel, colon, intestine). ]	
SHELLFISH CRAB (ALR)   Sensitivity, emotional sexual insecurity, cholera, colic (bowel, colon, intestine), stroke (brain), skin. ]	
CHROMOSOME 18 Q   MS susceptible, osteolysis (bone), neuropathy (nerve), senility (brain), rectal cancer (bowel, colon, intestine), B cell (bone marrow). ]	
BAPTISIA TINCTORIA   For intestinal (bowel, colon, intestine) toxemia, immune stimulant, counteracts inoculation (vaccines). \ ]	
ECHINOCOCCUS GRANULOSIS   Parasite (tapeworm), can id intestinal (bowel, colon, intestine) parasites of various kinds or sources. * ]	
HERB OLON: colon support/Monastery of Herbs	
DAUCUS CAROTA   For stomach and intestines (bowel, colon), carminative (relieves gas/wind/flatulence from alimentary canal), antihelminthic. \ * ]	
IRIS VERSICOLOR   For thyroid, pancreas, saliva, intestine mucous membranes (bowel, colon), increases bile (liver). \ ]	
GM264 YIN CHEN HAO TANG   Liver -- Jaundice, cholagogue, cholaretic ; diuretic (kidney, bladder, urethra), laxative (bowel, colon, intestine). ]	
PHELLOSTATIN   Tonifies spleen / stomach qi, cleanses colon, for intestinal candidiasis and its complications. Health Concerns ^ ]	
Fructooligosaccharides/ for gut (bowel, colon, intestine) micro flora growth support/ Biocare UK ]	
SKATOL   Chemical occurring in the bowel (colon, intestine) as a result of toxic bowel, makes the foul odor, phenol. ]	
EUFLOR 1   For intestinal (bowel, colon, intestine) dysbiosis from various origins. GUNA s.r.l., MILANO ]	

ELATERIUM   Squirting cucumber, acts on mucous membranes, causes watery flow, pain in bowels (colon, intestine), sciatic nerve. ]	
TAENIA SOLIUM WORM   Can id intestinal (bowel, colon, intestine) parasites of various kinds or sources. * ]	
SALVARIS LACTOBACILUS   Bacteria in bowel flora used to balance bowel (colon, intestine) flora. @ ]	
BILE   Emulsifies the digestive process in the small intestine made in liver stored in gallbladder recovered in large intestine (bowel, colon). ]	
CATATROPIS VERRUCOSA   Turning worm, can id intestinal (bowel, colon, intestine) parasites of various kinds or sources. * ]	
Bowel Flora Balance   Lactobacillus acidophilus, Lactobacillus casei, Bifidobacterium bifidum, Streptococcus lactis for entire intestinal tract (duodenum, colon intestine). BIOTICS E.N.B. @ ]	
MULTICEPS MULTICEPS   Tape worm, can id intestinal (bowel, colon, intestine) parasites of various kinds or sources. * ]	
ENTEROCOCCINUM   Bacteria family that can infect the digestive tract (bowel, colon, intestine) and produce ulcers and inflammation. @ ]	
TOMATO   Allergy or sensitivity, hard on small intestine (bowel, colon), can irritate hypoglycemia, good food. ]	
SYMBIO COMPOSITUM   Lactobacillus acidophilus, Lactobacillus casei, Bifidobacterium bifidum, Streptococcus lactis for entire intestinal tract (duodenum, colon). BIOTICS E.N.B. @ ]	
LM 55 INTESTINE bowel colon ]	
CONVOLVULUS ARVENSIS   Cardiac (heart) conditions, diuretic (kidney, bladder, urethra), laxative (bowel, colon, intestine). \ ]	
4034; Narayani 37 ACIDITY 30C Homeo mixture in all acid conditions, digestion, skin, corrosive excretions	
Digestizyme / Assimilation, Break down fibres / Sunshine Tool Works	
DIGESTIVE GLANDULAR, CARBOHYDRATES   Supplies amylase and other carbohydrate enzymes. ]	
FOOD ALLERGIES NKF	
SECRETIN   Collection of digestive enzymes, aids thinking disorders, digestive or inflammatory.	
POTASSIUM   Mineral nutrient needed for muscles, digestion, energy and thinking (brain), aids deficiency or excess. ]	
DIGEST AID NKF	
DETOX N.13   Kidney, Renal (bladder, urethra) toxins. GUNA s.r.l., MILANO ]	
PORIA   Oriental herb noted for effects on digestion and heart. \ ]	
ZYME S: enzymes for stomach support/Monastery of Herbs	
BARLEY (ALR)   Alkaline food for excess acidity, helpful for digestion, demulcent, softens tissues.	
Quercetin bioflavonoid with leukotriene association and bromelain digestive enzyme, anti-oxidant/ Biocare UK	

SODIUM   Depression, nerves, fatigue, digestion. mineral	
HERB OLON: colon support/Monastery of Herbs	
BRASSICA NIGRA - Black mustard   Purgative, affects peroxidase, digestive that stimulates gastric juices. \ ]	
ZINGIBER OFFICIN   Ginger, for digestion, morning sickness, respiration (lung), kidney failure, good food. \ ]	
FERRUM / FERROUS METALLICUM   Anemia with chill, vomiting, red face, thirst, cold, undigested food, mineral. ]	
MALT - Mai ya   Strengthens stomach and digestion, unblocks stifled emotional fusion. \ ]	
ASTRA 18 DIET   Promotes digestion & relieves congestion and bloating, disperses stagnant qi & phlegm, obesity. Health Concerns	
ANTI ACID FORMULA   Can id excess stomach acid, stress, or hyperchlorhydria. ]	
GM163 BU ZHONG YI QI TANG   Tonic, digestive stimulant, elevates and tones weakened or prolapsed structures, stimulates and protects the immune system.	
PANCHADEEPAKINI MIXTURE OF 5 HERBS Indigestion, stomach problems, cold, cough -- Sri Ramana Maharshi Natural Spagyric Remedies made for Duplication	
THIOCTIC ACID   From grains used to process by products, ids digestive intolerance to grains, phenol.	
BILE   Emulsifies the digestive process in the small intestine made in liver stored in gallbladder recovered in large intestine (bowel, colon). ]	
DIGESTAZON PLUS   Dietary Supplement. Amazon Herb Co.	
LIVER   Ids disease. sarcode	
ENTEROCOCCINUM   Bacteria family that can infect the digestive tract (bowel, colon, intestine) and produce ulcers and inflammation. @ ]	
MENTHA SPICATA   Stimulates lung, skin, digestion, clears other remedies. \	
LM 55 INTESTINE bowel colon ]	
(EP) DIGESZYME V   Vegetarian digestive enzymes.	
MONOAMINE OXIDASE   Enzyme needed to control depression, use 30x for depression.	
DIGESTIVE GLANDULAR, CARBOHYDRATES   Supplies amylase and other carbohydrate enzymes. ]	
RIBONUCLEASE   Enzyme used in RNA regulation, ids RNA disorder.	
TYROSINASE   Enzyme for tyrosine regulation, ids thyroid disease or depression.	
BLOOD, LACTIC DEHYDROGENASE Enzyme. ]	
Acid Phosphatase   Ids with bone disease or kidney disorder. Enzyme. ]	

SECRETIN   Collection of digestive enzymes, ids thinking disorders, digestive or inflammatory.	
Isocitrate Lyase   Enzyme for regulation of citrus intake, can id citrus intolerance.	
DL-METHIONINE S-METHYLSULFONIUM-VITAMIN U   Ubiquinone (coenzyme COQ10), ids oxygenation disorder, emotional suffocation. ]	
ASCORBATE OXIDASE   Enzyme in vitamin C metabolism, ids vitamin C regulation disturbance or excess. ]	
PT08 pituitary support as herbal, nutritional and enzyme combination for pituitary gland/ Biocare UK	
ZYME S: enzymes for stomach support/Monastery of Herbs	
Quercetin bioflavenoid with leukotriene association and bromelain digestive enzyme, anti-oxidant/ Biocare UK	
Penicillinase   Enzyme for penicillin hydrolysis, ids sensitivity or metabolic utilization.	
Isomaltase   Enzyme used in malt conversion to glucose, ids malt intolerance.	
BLOOD, 5' - Nucleotidase Enzyme. ]	
MYOKINASE   Enzyme involved in muscular action, ids muscle disease or muscle pain.	
Proactazyme / Vegetarian Enzymes / Sunshine Tool Works	
Angiotensin-Converting Enzyme Inhibitor   Ids blood pressure or stress regulation disease.	
ELASTASE   Enzyme for elastin and thus elasticity regulation, ids skin aging and enzyme deficiency. ]	
STEROID DEHYDROGENASE 12X   Enzyme that breaks up steroids in the body, ids steroid mal-effects.	
Glycogen Phosphorylase   Enzyme used in muscle energy production, ids fatigue.	
LACTOSE   Milk, sugar, can denote sensitivity or enzyme intolerance.	
NEURAMINIDASE   Enzyme on influenza particles, increased form can prevent influenza, ids flu tolerance. # ]	
(EP) DIGESZYME V   Vegetarian digestive enzymes.	
COCARBOXYLASE   Enzyme used in metabolism regulation, ids putrefaction and degeneration. ]	
LAC DEFLORATUM   Milk variation for homeopathic treatment of various conditions.	
Fructooligosaccharides/ for gut (bowel, colon, intestine) micro flora growth support/ Biocare UK ]	
SALVARIS LACTOBACILUS   Bacteria in bowel flora used to balance bowel (colon, intestine) flora. @ ]	
Bowel Flora Balance   Lactobacillus acidophilus, Lactobacillus casei,Bifidobacterium bifidumen Streptococcus lactis for entire intestinal tract (duodenum, colon intestine). BIOTICS E.N.B. @ ]	
Bifido bacterium infantis /pro-biotic in phosphates, particulary suitable for infant microflora development/ Biocare UK @]	
ANTENNARIA   Cholagogue (liver) ids gallbladder disease, for longevity or premature aging.\ ]	
PATIC 2: cleaning and strengthening the liver and gall bladder formula 2/Monastery of Herbs	

CLEAR PHLEGM   Clears heat in gallbladder, for phlegm, profuse sputum, emphysema (lung), hyperactivity, ADD. Health Concerns ]	
Gallopas Tropf.   Stomach, intestines (bowel, colon), pancreas, liver, gallbladder. PASCOE NATURMEDIZIN ]	
BETA TCP   Gallbladder support in case of too viscous bile. BIOTICS E.N.B.	
Lycopodium Spl.   Liver, gallbladder. PASCOE NATURMEDIZIN	
BILE   Emulsifies the digestive process in the small intestine made in liver stored in gallbladder recovered in large intestine (bowel, colon). ]	
LM 61 LIVER GALLBLADDER	
PHASEOLUS   Stimulates liver, gallbladder, promotes detox, overall nutrition stimulant, helps absorption and stimulation of nutrients, helps tissue to renew.	
DIOSOLRIA   Colic (bowel, colon, intestine), painful affections of abdominal and pelvic viscera, gallstone colic. ]	
AQUILARIA - Chen xiang   Abdomen distension pain, for the anal retentive (bowel, colon, intestine). \ Ayurvedic ]	
ARSENICUM ALBUM   Intestinal (bowel, colon, intestine) infections. NETSMANN-Arzneimittel ]	
AESCULUS GLABRA   Acts on lower bowel (colon, intestine), hemorrhoids, varicose veins, backache. \$ ]	
ANCYLOSTOMA TUBAEFORME   Worm, can id intestinal (bowel, colon, intestine) parasites of various kinds or sources. * ]	
Gastric Inhibitory Polypeptide   (bowel, colon, intestine, stomach) GASTROINTESTINAL PEPTIDE ]	
PLEO - Reb: Peyer's patches extract 4x   Immune stimulant, chronic inflammation bowels, leaky gut (colon intestine). ]	
VERMEX (NV)   Detox remedy for intestinal (bowel, colon, intestine) parasites, worms. * ]	
VENA-H (DR)   Combo remedy for hemorrhoidal (bowel, colon, intestine) conditions. ]	
ANTIMONITE   (Raw form of antimony crude) Acts on intestinal (bowel, colon, intestine) mucosa, skin, child deliriums, fretful, peevish. ]	
GALANIN   For stomach and intestinal disease. (bowel, colon, intestine, stomach) GASTROINTESTINAL PEPTIDE ]	
DIOSOLRIA   Colic (bowel, colon, intestine), painful affections of abdominal and pelvic viscera, gallstone colic. ]	
Gallopas Tropf.   Stomach, intestines (bowel, colon), pancreas, liver, gallbladder. PASCOE NATURMEDIZIN ]	
Immunoguard intestinal (bowel, colon, intestine) immune complex/ with immunoglobulant concentrate FOS, GLA, Vitamin E, potassium ascorbate, Zinc citrate, lactobacillus bulgaricus/ Biocare UK ]	1
DICROCOELIUM LANCEATUM   Worm, can id intestinal (bowel, colon, intestine) parasites of various kinds or sources. * ]	1
GM262 ZHI SHI, BING LANG, WU YAO   Constipation, abdominal bloating, abdominal pain from qi stagnation, paralytic ileus following abdominal surgery (bowel, colon, intestine). ]	

SHELLFISH CRAB (ALR)   Sensitivity, emotional sexual insecurity, cholera, colic (bowel, colon, intestine), stroke (brain), skin. ]	
CHROMOSOME 18 Q   MS susceptible, osteolysis (bone), neuropathy (nerve), senility (brain), rectal cancer (bowel, colon, intestine), B cell (bone marrow). ]	
BAPTISIA TINCTORIA   For intestinal (bowel, colon, intestine) toxemia, immune stimulant, counteracts inoculation (vaccines). \ ]	
ECHINOCOCCUS GRANULOSIS   Parasite (tapeworm), can id intestinal (bowel, colon, intestine) parasites of various kinds or sources. * ]	
DAUCUS CAROTA   For stomach and intestines (bowel, colon), carminative (relieves gas/wind/flatulence from alimentary canal), antihelminthic. \ * ]	
IRIS VERSICOLOR   For thyroid, pancreas, saliva, intestine mucous membranes (bowel, colon), increases bile (liver). \ ]	
GM264 YIN CHEN HAO TANG   Liver -- Jaundice, cholagogue, cholaretic ; diuretic (kidney, bladder, urethra), laxative (bowel, colon, intestine). ]	
3rd MOLAR UPPER LEFT   TOOTH sarcode	
Fructooligosaccharides/ for gut (bowel, colon, intestine) micro flora growth support/ Biocare UK ]	
SKATOL   Chemical occuring in the bowel (colon, intestine) as a result of toxic bowel, makes the foul odor, phenol. ]	
EUFLOR 1   For intestinal (bowel, colon, intestine) dysbiosis from various origins. GUNA s.r.l., MILANO ]	
1st BICUSPID LOWER RIGHT   TOOTH sarcode	
ELATERIUM   Squinting cucumber, acts on mucous membranes, causes watery flow, pain in bowels (colon, intestine), sciatic nerve. ]	
TAENIA SOLIUM WORM   Can id intestinal (bowel, colon, intestine) parasites of various kinds or sources. * ]	
SALVARIS LACTOBACILUS   Bacteria in bowel flora used to balance bowel (colon, intestine) flora. @ ]	
BILE   Emulsifies the digestive process in the small intestine made in liver stored in gallbladder recovered in large intestine (bowel, colon). ]	
CATATROPIS VERRUCOSA   Turning worm, can id intestinal (bowel, colon, intestine) parasites of various kinds or sources. * ]	
Bowel Flora Balance   Lactobacillus acidophilus, Lactobacillus casei, Bifidobacterium bifidum, Streptococcus lactis for entire intestinal tract (duodenum, colon intestine). BIOTICS E.N.B. @ ]	
MULTICEPS MULTICEPS   Tape worm, can id intestinal (bowel, colon, intestine) parasites of various kinds or sources. * ]	
ENTEROCOCCINUM   Bacteria family that can infect the digestive tract (bowel, colon, intestine) and produce ulcers and inflammation. @ ]	

TOMATO   Allergy or sensitivity, hard on small intestine (bowel, colon), can irritate hypoglycemia, good food. ]	
LM 55 INTESTINE bowel colon ]	
CONVOLVULUS ARVENSIS   Cardiac (heart) conditions, diuretic (kidney, bladder, urethra), laxative (bowel, colon, intestine). \ ]	
ANTENNARIA   Cholagogue (liver) ids gallbladder disease, for longevity or premature aging.\ ]	
CITRUS RETICULATA - Qing pi   Detoxifier, disperses stagnant liver energy. \	
EUCOMMIA BARK - Du zhong   Tonifies liver yang and liver energy, heightens exuberance and joy of life (joie di vivre). \ ]	
LIPOTROPIC FACTORS   Amino acids and vitamins for liver function.	
PATIC 2: cleaning and strengthening the liver and gall bladder formula 2/Monastery of Herbs	
OXAA ORGANIZER   Cell deep tissue cleanser (liver, bones, breast).	
TESTOSTERONE   Male sex hormone, ids deficiency or excess, treat liver. ]	
PORPHYRIA   Liver problem that produces eye disorders (photophobia). ]	
ASTRA ISATIS   For exogenous wind invasion, chronic viral infection, chronic fatigue, agitation, herpes, HIV, liver, hepatitis. Health Concerns # ]	
Barley Green / Whole food, Immune, Liver, Inflammation / Sunshine Tool Works	
Gallopas Tropf.   Stomach, intestines (bowel, colon), pancreas, liver, gallbladder. PASCOE NATURMEDIZIN ]	
EVODIA - Wu zhu yu   Warms middle warmer especially for cold in liver meridian - Shan Syndrome. \	
Hepaguard forte liver support with choline, inositol, milk thistle, lipase, methionine, taurine, alpha lipoic acid, green tea extract and biotin/ Biocare UK	
PAS HEPAR PASC   For stimulating the liver.	1
HEPATICUM   For stimulating the liver	
CARDUUS MARIANUS   For liver and portal system (veins, capillaries), varicose veins, alcoholism, asthma (lung). \ ]	
GM166 XIAO CHAI HU TANG   Postivral & Shaoyang syndromes, mastitis, ear disorders, improves liver function, reduces AST and ALT, enhances immunity, aids clearance of residual pathogens.	
IRIS VERSICOLOR   For thyroid, pancreas, saliva, intestine mucous membranes (bowel, colon), increases bile (liver). \ ]	
GM264 YIN CHEN HAO TANG   Liver -- Jaundice, cholagogue, cholaretic ; diuretic (kidney, bladder, urethra), laxative (bowel, colon, intestine). ]	
Lycopodium Spl.   Liver, gallbladder. PASCOE NATURMEDIZIN	1

ACYCLOVIR   Herpes simplex 1and 2, Epstein Barr Virus (EBV), cellular enlargement, chronic fatigue, weak liver, nasopharyngeal carcinoma, Burkitts lymphoma. ALO # ]	1
HEPATITIS D   Virus remedy, liver. Biological Warfare Variations # ]	1
(EP) FORMULA ADX 133   Allergy help with liver extract, vitamin A and selected B vitamins.	1
BILE   Emulsifies the digestive process in the small intestine made in liver stored in gallbladder recovered in large intestine (bowel, colon). ]	1
LM 61 LIVER GALLBLADDER	1
LIVER   Ids disease. sarcode	1
ME-1 (DR)   Combo remedy for Herpes Epstein Barr Virus (EBV), cellular enlargement, chronic fatigue, weak liver, nasopharyngeal carcinoma, Burkitts lymphoma. ] #	1
GM146 TIAN MA GOU TENG YIN   Hypertension, apoplexy, menopausal syndrome, Meniere's disease, epilepsy, headaches, vertigo, liver yang rising and internal wind.	1
PHASEOLUS   Stimulates liver, gallbladder, promotes detox, overall nutrition stimulant, helps absorption and stimulation of nutrients, helps tissue to renew.	
GM195 SHEN FU TANG (NORTHERN AUSTRALIA & U.S.)   Shock, heart failure, improves blood and microcirculation, increases myocardial contraction, improves liver function and increases immunity. ]	
BIO B+C   Complex B with adjunction of vitamine C, glandulai, liver, hepatic, pancreatic lipase, lysine. BIOTICS E.N.B. ]	
ALKYROL   Shark liver oil, immune booster.	
POTASSIUM CARBONATE   Ids potassium deficiency and pancreas disease. ]	
SULFONYLUREAS   Lower blood pressure, used by diabetics (pancreas). ALO ]	
GLYCYRRHIZA GLABRA   Stabilizes blood sugar (pancreas), women's / female problems and addiction. \ ]	
Gallopas Tropf.   Stomach, intestines (bowel, colon), pancreas, liver, gallbladder. PASCOE NATURMEDIZIN ]	
DIABETES, BRONZE - Hemochromatosis   A disease of (pancreas) metabolism characterized by deposition of pigment in various organs of the body. } DEDIC ]	
POLYGONATUM MULTIFLORUM   Solomon's seal, for diabetes (pancreas), lowers stress, women's / female diseases / problems / complaints. \ ]	
EUPATORIUM PURPUREUM   Albuminuria (kidney), diabetes (pancreas), prostatitis, impotence (prostate), sterility. \ ]	
IRIS VERSICOLOR   For thyroid, pancreas, saliva, intestine mucous membranes (bowel, colon), increases bile (liver). \ ]	
K2 M DIA   Help for diabetes (pancreas) in males. GUNA s.r.l., MILANO ]	

CYTIZYME PAN   Neonatal bovine pancreas. BIOTICS E.N.B.	
PANCHADEEPAKINI MIXTURE OF 5 HERBS Indigestion, stomach problems, cold, cough -- Sri Ramana Maharshi Natural Spagyric Remedies made for Duplication	
SIRUKURINJAN GYMNEMA SYLVESTRE Diabetes, pancreas, appetizer -- Sri Ramana Maharshi Natural Spagyric Remedies made for Duplication	
APIS-COMPOSITUM   For the pancreas.	
FASCIOLOPSIS CERCARIA   Parasite mostly in kidney bladder and pancreas. *	
BIO B+C   Complex B with adjunction of vitamine C, glandulai, liver, hepatic, pancreatic lipase, lysine. BIOTICS E.N.B. ]	
IRIS VERSICOLOR   For thyroid, pancreas, saliva, intestine mucous membranes (bowel, colon), increases bile (liver). \ ]	
TRIFOLIUM PRATENSE   Red clover makes ptyalin (amylase in saliva), treatment for mumps (virus infecting parotid), stiff neck fatigue. \ # ]	
Gastric Inhibitory Polypeptide   (bowel, colon, intestine, stomach) GASTROINTESTINAL PEPTIDE ]	
Rennin   Stomach hormone, ids stomach control disorder.	
GALANIN   For stomach and intestinal disease. (bowel, colon, intestine, stomach) GASTROINTESTINAL PEPTIDE ]	
Gallopas Tropf.   Stomach, intestines (bowel, colon), pancreas, liver, gallbladder. PASCOE NATURMEDIZIN ]	
ZYME S: enzymes for stomach support/Monastery of Herbs	
DAUCUS CAROTA   For stomach and intestines (bowel, colon), carminative (relieves gas/wind/flatulence from alimentary canal), antihelminthic. \ * ]	
GASTRO-I (DR)   Combo remedy for stomach lining ulcerations.	
MALT - Mai ya   Strengthens stomach and digestion, unblocks stiffled emotional fusion. \ ]	
PHELLOSTATIN   Tonifies spleen / stomach qi, cleanses colon, for intestinal candidiasis and its complications. Health Concerns ^ ]	
ANTI ACID FORMULA   Can id excess stomach acid, stress, or hyperchlorhydria. ]	
PANCHADEEPAKINI MIXTURE OF 5 HERBS Indigestion, stomach problems, cold, cough -- Sri Ramana Maharshi Natural Spagyric Remedies made for Duplication	
ENTEROCOCCINUM   Bacterial infection likely to cause ulcers in stomach. @	
BISMUTHUM OXIDATUM   Identifies with stomach infections leading to ulcer, mineral.	
FRUCTOSE   Fruit sugar stimulates hormone production and delays aging.	
STEVIA   Rebaudiana, sugar substitute.	

GLYCYRRHIZA GLABRA   Stabilizes blood sugar (pancreas), women's / female problems and addiction. \ ]	
L-GLUTAMINE   L-glutamine (500 mg), use it with alcoholism, sugar cravings, impotence, fatigue and gastric inflammation. BIOTICS E.N.B.	
GLYCINE   Amino acid found in animal proteins, ids sugar muscle disturbance.	
PROGLYCO-SP (K-13)   For sugar metabolism support, multi vitamin, mineral & glandular dietary supplement. APEX ENERGETICS	
SACROMYCOSIS 3   Sugar yeast indicates allergy or systemic fungus infection. ^	
LACTOSE   Milk, sugar, can denote sensitivity or enzyme intolerance.	
LUPUS   Auto immune disease with sun sensitivity, ulcerations of skin, blotches.	
PEPTIC ULCER   }	
GASTRO-I (DR)   Combo remedy for stomach lining ulcerations.	
BEHCET'S SYNDROME   Accumulation of pus in the eyes (uveitis), and inflammation of the iris (iritis), (2) painful mouth ulcers (aphthous stomatitis), and (3) ulcers on the external genitalia. ] } DED	
ENTEROCOCCINUM   Bacterial infection likely to cause ulcers in stomach. @	
ENTEROCOCINUM   Bacteria family that can infect the digestive tract (bowel, colon, intestine) and produce ulcers and inflammation. @ ]	
PTERIS HERBA   Bracken, brake fern, used in diet drinks and mead for ulcers, good food. \	
BISMUTHUM OXIDATUM   Identifies with stomach infections leading to ulcer, mineral.	
PLEO - Nig: Aspergillus niger 5x   Lymph, tubercular, ulcerations, otitis media (ear), skin disorders. ^ ]	

Degen eration	Toxicit y	Blocka ge	Deficie ncy	Sensiti vity	Imbala nce
			1		
			1		
			1		1
			1		1
	1	1	1		
	1	1	1		
					1
					1
		1			1
		1			1
		1			1
			1		1
1					1
					1

	1			1	
	1		1		
			1		
			1		
			1		
		1			1
			1		
	1	1			
	1	1			
		1			
		1			
		1			
		1			
1					1
					1
	1				
			1		
1		1			

					1
			1		1
					1
			1		1
			1		1
			1		1
					1
					1
			1		1
			1		
			1		
					1
					1
			1		1
		1			
		1			
			1		
	1		1		
		1			1
		1			1
			1		
	1		1		
			1		
			1		

[illegible]

			1		
			1		
			1		
			1		
			1		
			1		
			1		
			1		
			1		
			1		
			1		
			1		
			1		
			1		
			1		
			1		
			1		
			1		
			1		
			1		
			1		
			1		
			1		
			1		
	1				
	1				
	1				
	1				
1				1	
			1		1

			1		1
			1		1
			1		
			1		
			1		
			1		
			1		
		1	1		
			1		
			1		
			1		
1			1		
1			1		
			1		
			1		
			1		
	1		1		
		1	1		
			1		
			1		
			1		
			1		
	1		1		

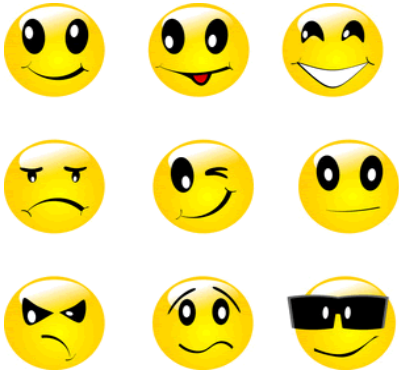
[illegible]

					1
					1
					1
			1		
			1		
			1		
		1	1		
	1		1		
			1		
			1		
			1		
	1		1		
			1		
			1		
			1		
	1		1		
			1		
		1	1		

		1			
			1		
	1				
	1				
			1		
			1		
			1		
		1	1		
		1	1		
			1		
			1		
			1		
			1		

[illegible]

[illegible]



No	Value	Sub
4592	112	(FE)
2869	110	(FE)
4841	109	(FE)
4503	106	(FE)
4518	104	(FE)
4511	103	(FE)
4715	103	(FE)
4891	103	(FE)
4968	103	(FE)
4637	102	(FE)
4754	102	(FE)
4622	101	(FE)
4860	101	(FE)
2882	100	(FE)
4620	100	(FE)
4815	100	(FE)
4843	50	(FE)

4915	<b>50</b>	(FE)
4509	<b>49</b>	(FE)
4598	<b>49</b>	(FE)
4628	<b>49</b>	(FE)
4657	<b>49</b>	(FE)
4830	<b>49</b>	(FE)
4858	<b>49</b>	(FE)
4859	<b>49</b>	(FE)
4482	<b>48</b>	(FE)
4526	<b>48</b>	(FE)
4510	<b>47</b>	(FE)
4787	<b>47</b>	(FE)
4932	<b>47</b>	(FE)
4474	<b>46</b>	(FE)
4898	<b>46</b>	(FE)
4508	<b>45</b>	(FE)
4585	<b>45</b>	(FE)
4710	<b>44</b>	(FE)
4480	<b>43</b>	(FE)
4601	<b>43</b>	(FE)
4741	<b>43</b>	(FE)
4770	<b>43</b>	(FE)
4870	<b>42</b>	(FE)
4872	<b>42</b>	(FE)
4654	<b>41</b>	(FE)

4834	<b>41</b>	(FE)
4922	<b>41</b>	(FE)
4574	<b>40</b>	(FE)
4850	<b>39</b>	(FE)
4487	<b>38</b>	(FE)
4823	<b>38</b>	(FE)
2869	<b>110</b>	Bach
2882	<b>100</b>	Bach
1735	<b>123</b>	Chakra
4622	<b>101</b>	Chakra
8458	<b>49</b>	Chakra
4898	<b>46</b>	Chakra
8072	<b>46</b>	Chakra
312	<b>120</b>	Emotion
9839	<b>119</b>	Emotion
1609	<b>116</b>	Emotion
291	<b>115</b>	Emotion
2779	<b>115</b>	Emotion
854	<b>114</b>	Emotion
2789	<b>110</b>	Emotion
181	<b>109</b>	Emotion
4464	<b>109</b>	Emotion
9840	<b>108</b>	Emotion

2491	<b>107</b>	Emotion
254	<b>105</b>	Emotion
2773	<b>104</b>	Emotion
8241	<b>104</b>	Emotion
4426	<b>103</b>	Emotion
213	<b>101</b>	Emotion
591	<b>101</b>	Emotion
1681	<b>101</b>	Emotion
8766	<b>101</b>	Emotion
9287	<b>101</b>	Emotion
5338	<b>50</b>	Emotion
861	<b>49</b>	Emotion
2788	<b>49</b>	Emotion
145	<b>48</b>	Emotion
1360	<b>48</b>	Emotion
2771	<b>48</b>	Emotion
2790	<b>48</b>	Emotion
4423	<b>48</b>	Emotion
1561	<b>47</b>	Emotion
3452	<b>47</b>	Emotion
4367	<b>47</b>	Emotion

380	<b>46</b>	Emotion
5402	<b>46</b>	Emotion
309	<b>45</b>	Emotion
5335	<b>45</b>	Emotion
809	<b>44</b>	Emotion
811	<b>44</b>	Emotion
832	<b>44</b>	Emotion
323	<b>43</b>	Emotion
4306	<b>43</b>	Emotion
4456	<b>43</b>	Emotion
816	<b>42</b>	Emotion
1464	<b>40</b>	Emotion
1718	<b>108</b>	Meridian
1728	<b>104</b>	Meridian
1722	<b>103</b>	Meridian
4401	<b>101</b>	Meridian
1713	<b>50</b>	Meridian
1724	<b>48</b>	Meridian
8690	<b>44</b>	Meridian
8480	<b>41</b>	Meridian



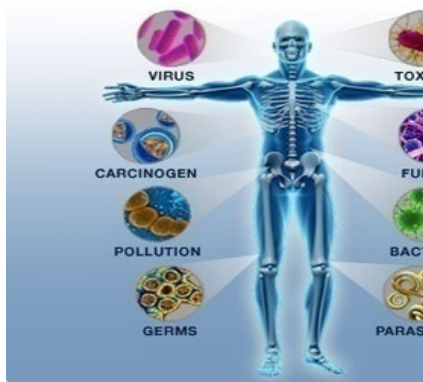
Description
(FE) PURPLE NIGHTSHADE   Soothing calm.
BACH FLOWER CERATO   Distrust of self, doubt one's abilities, foolishness. (FE)
(FE) CAMPHORWEED   Helps to feel grounded and bring things into manifestation
(FE) BIRCH - MALE   Interpersonal relationships.
(FE) CERATO   Self reliance, reduces spiritual fear of embarrassment.
(FE) CALIFORNIA POPPY   Psychic, spiritual balance.
(FE) SENECIO   Fear of aging.
(FE) THISTLE   Helps to recognize grace in oneself.
(FE) WATER POPPY   Promotes a fluid balance between over activity and lethargy.
(FE) ANGEL ORCHID   It is uplifting and increases physical vibrations.
(FE) BORAGE   Disheartened.
(FE) STRAWBERRY   Stimulates visions.
(FE) INMORTAL   Excellent for chronic depression.
BACH FLOWER IMPATIENS   Impatience, irritable, extreme mental tension. (FE)
(FE) SQUASH - ZUCCHINI   Youthfulness.
(FE) OREGANUM   Grace, ease.
(FE) CANE CHOLLA CACTUS   Helps to open new perspectives.

(FE) AKIA   For overcoming the frustrations and restrictions of the daily life.
(FE) CALENDULA   Inner light.
(FE) ROSA BEGGERIANA   Increases intuition.
(FE) WATERMELON   Emotions of pregnancy.
(FE) BANKSIA ROBUR   Enjoyment of an interest in life.
(FE) RED CAMELLIA   Inner child shock and fear.
(FE) INDIAN TOBACCO   Brings heightened perception of depth and meaning to see below the surface.
(FE) INDIGO BUSH   Helps anchor spiritually achieved ideas into daily life.
(FE) OKRA   Restores ability to see the positive in one's life and environment.
(FE) CORN SWEET   Urban dwellers.
(FE) CALIFORNIA BAY LAUREL   Flexibility and wisdom.
(FE) GRASSY BELL   Deep hurt, pain and fear relating to betrayal.
(FE) ALLAMANDA   This is a strengthening and motivating essence for the willpower.
(FE) CAULIFLOWER   Stabilizes and balances the child during the birth process.
(FE) INNER CLEANSING CACTUS   Protects the head's aura.
(FE) BORAGE   Calm.
(FE) PERILLA   Hands-on energy.
(FE) WISTERIA   Women who feel uncomfortable about their sexuality.
(FE) DILL   Assists individual in reclaiming power balance one has released to others.
(FE) ROSA CORYMBIFERA   Calm / peace.
(FE) ZIMBABWE CREEPER   Inability to accept help, polarization in masculine energy.
(FE) DAFFODIL   Self criticism, self hatred, depression.
(FE) ORGAN PIPE CACTUS   Supports in dealing with mundane aspects of life.
(FE) QUEEN OF THE NIGHT CACTUS   Helps to experience the blissful perspective of deep understanding.
(FE) VICTORIA REGIA   Helps those who are on the threshold of leaving this word.

(FE) ARROYO WILLOW   Helps us to responsibly create our life experiences.
(FE) HAU   A calming balancing influence in times of nervous stress.
(FE) NUTMEG   Past life therapy.
(FE) DESERT SUMAC   Helps to transform the pain of loneliness and separation.
(FE) TOMATO   Cleansing the body from infection or disease. @ # ^ * ]
(FE) PETUNIA   Inspiration, visualization.
BACH FLOWER CERATO   Distrust of self, doubt one's abilities, foolishness. (FE)
BACH FLOWER IMPATIENS   Impatience, irritable, extreme mental tension. (FE)
4TH CHAKRA - HEART   A chakra reacts if it is over sensitive from use or if it ready to open. ]
(FE) STRAWBERRY   Stimulates visions.
4TH CHAKRA WOMEN - HEART   Balances chakra. Prof. Orsatti, Milan - Italy ]
(FE) INNER CLEANSING CACTUS   Protects the head's aura.
7TH CHAKRA MEN - CROWN   Balances chakra. Prof. Orsatti, Milan - Italy ]
SOPHORAE FLOS   For circulatory conditions, need to analyze emotions more. \ ]
OG-Y/ formula for balancing Onco Genes related to Emotions /Monastery of Herbs
LETTUCE (ALR)   Sensitivity can id excess testosterone, emotional remedy for sex disorders.
RNA-DNA   Ids with metabolic disorders, emotional link to ancestral guilt and fear miasm. \
DEPRESSION   This imponderable homeopathic reacts from excess or supression. Neuro Emotional Complex (NEC) \$ emotion ]
LETTUCE   Allergy or sensitivity can id excess testosterone, emotional remedy for sex dysfunctions, good food. ]
RATIONALIZATION   This imponderable homeopathic reacts from excess or supression. Neuro Emotional Complex (NEC) \$ emotion ]
JASMINUM OFFICINAL   Hidden emotional disturbances, good food. \
TIENCHI PSEUDOGINSENG - San qi   Stops bleeding, for emotional repression. \
OG-Z/ formula for balancing Onco Genes related to Emotions/Monastery of Herbs

Leucine Enkephalin   Brain hormone for pain & emotional control.
PHARBITIDIS SEMEN   Morning glory seeds, stimulates emotional release of growth trauma, vermifuge. \ * ]
ANXIETY   This imponderable homeopathic reacts from excess or supression. Neuro Emotional Complex (NEC) \$ emotion ]
8241;Narayani Special 39 TENSION 10M homeo mixture for stress, depression, calming
MILLETTIA STEM - Ji xue teng   Moves and tonifies the blood, unblocks stifled emotional fusion. \
MELIAE TOSENDAN FRUCTUS   Weight loss, energy, emotional inability to see problems. \
DL-METHIONINE S-METHYLSULFONIUM-VITAMIN U   Ubiquinone (coenzyme COQ10), ids oxygenation disorder, emotional suffocation. ]
SHELLFISH CRAB (ALR)   Sensitivity, emotional sexual insecurity, cholera, colic (bowel, colon, intestine), stroke (brain), skin. ]
Z-30 Male Zyme Plus / TERRAINZYME NUTRITIONALS / APEX ENERGETICS   Broad nutritive pre/post menopause, hormones, emotions, energy.
Epstien Barr virus of emotional dyscontrol and transmitted viral codition 3 # ]
INADEQUACY   This imponderable homeopathic reacts from excess or supression.
NUTMIX (BRAZIL)   Allergy or sensitivity, emotional remedy for vegetarian depression, good food.
PROJECTION   This imponderable homeopathic reacts from excess or supression. Neuro Emotional Complex (NEC) \$ emotion ]
FRANKINCENSE TEARS   Emotional remedy for spiritual cleansing. \
ATP-CALCIUM SALT   Ids energy disturbance, emotional link to unhealed stress binge in past.
AGGRESSION   This imponderable homeopathic reacts from excess or supression. Neuro Emotional Complex (NEC) \$ emotion ]
RECKLESS   This imponderable homeopathic reacts from excess or supression. Neuro Emotional Complex (NEC) \$ emotion ]
MALT - Mai ya   Strengthens stomach and digestion, unblocks stifled emotional fusion. \ ]
CYPRESS (ALR)   Allergy or sensitivity to the pollen, emotional remedy for nerves, excess coffee use.
MUSCLE FACIAL FRONTALIS   Facial expression frown or negative emotion. sarcode \$ ]
ASTER - Zi wan   Eliminates phlegm and cough (lung), unblocks emotional release. \ Ayurvedic ]

BUTYRICUM ACIDUM   Food additive sensitivity, emotional link to fake feelings of friendship.
ISOLEUCINE   Emotional control, nerves. amino acid
SMILAX ORNATA   Remedy for the throat, emotional blockage of expression. \
JUDGMENTAL   This imponderable homeopathic reacts from excess or supression. Biological Warfare
CARROT   Excellent food for cancer risks, emotional remedy for long term regrets, good food.
CATTLE   Allergy or sensitivity, emotional link to fear of killing things.
FLAX SEED   Allergy or sensitivity, can indicate fatty acid deficiency, emotional remedy for fear of pain. ]
SALIX ALBA   White willow, for pain, emotional sadness. \
SHILAJIT   Ayurvedic herb, yin restorative for when yang would be too overpowering, for promoting emotional serenity. \
SILER - Fang feng   Expels wind, induces sweating (common cold), for emotional repression. \
CHICKEN   Allergy or sensitivity, scratching from emotional cause, good food.
AMELOPSIS QUIN   Emotional inability to express inner feelings. \
LYMPH MERIDIAN   This acupuncture meridian has shown reactivity, possible blockage.
CIRCULATION MERIDIAN   This acupuncture meridian has shown reactivity, possible blockage.
KIDNEY MERIDIAN   This acupuncture meridian has shown reactivity, possible blockage.
EVODIA - Wu zhu yu   Warms middle warmer especially for cold in liver meridian - Shan Syndrome. \
P.E.D. MERIDIAN - Degeneration   This acupuncture meridian has shown reactivity, possible blockage.
HEART MERIDIAN   This acupuncture meridian has shown reactivity, possible blockage.
C-6 SPLEEN BLOOD ACTIVATOR/CAUSAL CHAIN THERAPY C-PLEX/FUTURE PLEX spleen meridian & funct.support,acute/chronic
Vidya Spleen yin   Normalization of the spleen and its meridian yin strength.



No	Value	Sub
5317	117	Bacteria
3847	101	Bacteria
3895	101	Bacteria
7685	50	Bacteria
2114	48	Bacteria
3893	46	Bacteria
1891	45	Bacteria
3896	43	Bacteria
7668	42	Bacteria
3117	121	Blood
3944	116	Blood
8580	116	Blood
1920	115	Blood

9262	<b>115</b>	Blood
2481	<b>111</b>	Blood
3934	<b>111</b>	Blood
7127	<b>109</b>	Blood
6387	<b>108</b>	Blood
155	<b>103</b>	Blood
2526	<b>103</b>	Blood
4426	<b>103</b>	Blood
9240	<b>102</b>	Blood
297	<b>101</b>	Blood
2145	<b>100</b>	Blood
3950	<b>100</b>	Blood
3939	<b>50</b>	Blood
7231	<b>50</b>	Blood
3961	<b>49</b>	Blood
3096	<b>48</b>	Blood
3916	<b>48</b>	Blood
5982	<b>48</b>	Blood
2499	<b>47</b>	Blood
3948	<b>47</b>	Blood
6977	<b>47</b>	Blood
8878	<b>45</b>	Blood

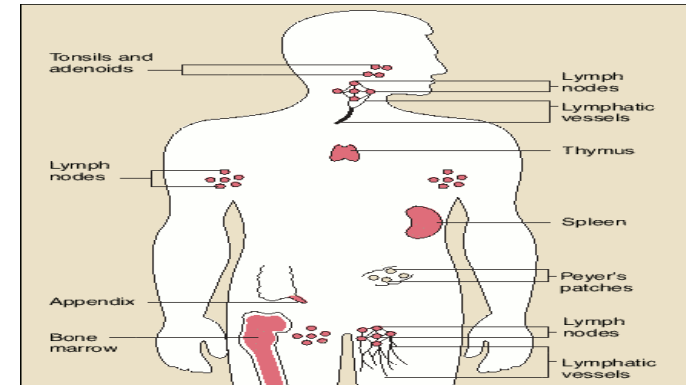
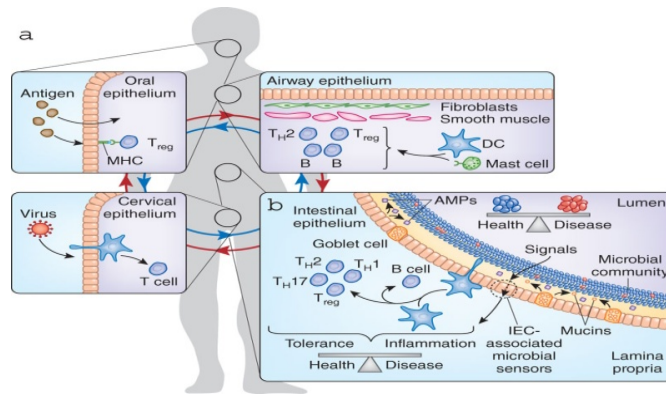
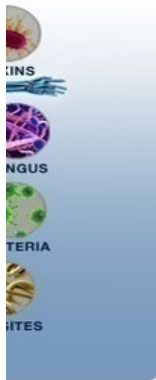
2823	<b>44</b>	Blood
8690	<b>44</b>	Blood
635	<b>43</b>	Blood
3959	<b>43</b>	Blood
3721	<b>42</b>	Blood
6925	<b>41</b>	Blood
1598	<b>39</b>	Blood
9116	<b>105</b>	Congest
1996	<b>101</b>	Congest
6933	<b>49</b>	Congest
7447	<b>48</b>	Congest
7451	<b>48</b>	Congest
10054	<b>48</b>	Congest
1157	<b>46</b>	Congest
1959	<b>121</b>	Fungus
1647	<b>117</b>	Fungus
1071	<b>116</b>	Fungus
5326	<b>116</b>	Fungus
1501	<b>106</b>	Fungus
4054	<b>105</b>	Fungus

1504	<b>103</b>	Fungus
6055	<b>50</b>	Fungus
9987	<b>42</b>	Fungus
2375	<b>41</b>	Fungus
1959	<b>121</b>	Immune
1647	<b>117</b>	Immune
5326	<b>116</b>	Immune
9262	<b>115</b>	Immune
6166	<b>114</b>	Immune
8795	<b>114</b>	Immune
3856	<b>112</b>	Immune
4982	<b>112</b>	Immune
1272	<b>107</b>	Immune
1802	<b>107</b>	Immune
7328	<b>107</b>	Immune
1501	<b>106</b>	Immune
2167	<b>106</b>	Immune
7929	<b>104</b>	Immune
9218	<b>104</b>	Immune
1504	<b>103</b>	Immune
1985	<b>103</b>	Immune
8995	<b>103</b>	Immune
8535	<b>102</b>	Immune

1672	<b>100</b>	Immune
44	<b>50</b>	Immune
1633	<b>50</b>	Immune
3149	<b>50</b>	Immune
6940	<b>50</b>	Immune
7231	<b>50</b>	Immune
9298	<b>50</b>	Immune
3017	<b>49</b>	Immune
754	<b>48</b>	Immune
7849	<b>47</b>	Immune
8536	<b>47</b>	Immune
6911	<b>46</b>	Immune
2076	<b>45</b>	Immune
5180	<b>44</b>	Immune
6197	<b>38</b>	Immune
8581	<b>34</b>	Immune
8793	<b>33</b>	Immune
1814	<b>120</b>	Lymph
1482	<b>117</b>	Lymph
1718	<b>108</b>	Lymph
8177	<b>108</b>	Lymph

933	<b>107</b>	Lymph
742	<b>102</b>	Lymph
10027	<b>45</b>	Lymph
1877	<b>43</b>	Lymph
4978	<b>31</b>	Lymph
7748	<b>134</b>	Metal
1361	<b>126</b>	Metal
7211	<b>103</b>	Metal
1341	<b>49</b>	Metal
1136	<b>47</b>	Metal
4982	<b>112</b>	Pleo
4978	<b>31</b>	Pleo
1920	<b>115</b>	Toxic
1106	<b>111</b>	Toxic
6840	<b>111</b>	Toxic
1175	<b>101</b>	Toxic
1143	<b>100</b>	Toxic
1586	<b>100</b>	Toxic
777	<b>50</b>	Toxic
1128	<b>50</b>	Toxic
1304	<b>48</b>	Toxic
1114	<b>47</b>	Toxic
1136	<b>47</b>	Toxic

9468	<b>47</b>	Toxic
6831	<b>43</b>	Toxic
5544	<b>42</b>	Toxic
1319	<b>41</b>	Toxic
1598	<b>39</b>	Toxic
9287	<b>101</b>	Virus
9809	<b>101</b>	Virus
2145	<b>100</b>	Virus
7746	<b>100</b>	Virus
8469	<b>50</b>	Virus
6263	<b>48</b>	Virus
7667	<b>48</b>	Virus
9797	<b>46</b>	Virus
7713	<b>44</b>	Virus
969	<b>42</b>	Virus
341	<b>40</b>	Virus



Description	
PASTERELLA	Bacteria found in diseased tissue of putrid flesh, highly virulent and destructive. @ ]
PRION BACTERIA ATTACHED	@
BRUCELOSIS	Bovine bacteria that is involved with chronic fatigue symptoms. @
TYPHOID REMEDY	Bacteria Salmonella typhi. Biological Warfare Variations @ ]
TOXOPLASMOSIS	Bacteria found in cats, problem in pregnancy. @
SALVARIS LACTOBACILUS	Bacteria in bowel flora used to balance bowel (colon, intestine) flora. @ ]
ENTEROCOCCINUM	Bacterial infection likely to cause ulcers in stomach. @
ENTEROCOCINUM	Bacteria family that can infect the digestive tract (bowel, colon, intestine) and produce ulcers and inflammation. @ ]
LYMES	Bacteria Spirochete borrelia from Ixodes tick bite, inflammatory, skin lesions, erythema, chronic fatigue, chills, fever, cardiac/neurological. remedy Biological Warfare Variations @ * ]
SEDA PASC	General sclerotic conditions, lead paralysis, localized neuralgia, low red blood cells, multiple sclerosis, mental depression.
BLOOD, Po2	
STEVIA	Rebaudiana, sugar substitute.
FELINE LEUKEMIA VACCINE	Vaccine can produce blood toxicity in humans, exposition to cats.

Capsicum & Garlic w, Parsley / Normalise Blood Pressure-Immune / Sunshine Tool Works
ANGIOTENSIN III INHIBITOR   Bioactive peptide hormone related to stress and blood pressure.
BLOOD, LACTIC DEHYDROGENASE Enzyme. ]
VASCULAR ENDOTHELIAL GROWTH FACTOR   Gene that stimulates growth of new blood vessels.
SULFONYLUREAS   Lower blood pressure, used by diabetics (pancreas). ALO ]
GLYCYRRHIZA GLABRA   Stabilizes blood sugar (pancreas), women's / female problems and addiction. \ ]
VASOPRESSIN   Antidiuresis, blood pressure regulator, stimulates central nervous system. OPIOID PEPTIDE
MILLETTIA STEM - Ji xue teng   Moves and tonifies the blood, unblocks stifled emotional fusion. \
Butcher's Broom / Circulatory, Blood Clots / Sunshine Tool Works
SANGUISORBAE RADIX   Burnet-bloodwort root, clears heat, promotes healing, burns, eczema (skin), antiemetic (reduces vomiting). \ ]
VERRUCA   Type of plantar wart, usually large with independent blood supply, caused by virus. #
BLOOD, PRIMIDONE
BLOOD, 5' - Nucleotidase Enzyme. ]
7231;Narayani 63 BACK UP ( booster) 30C Homeo mixture for blood, immune system, glands, bones
BLOOD, UREA NITROGEN
CHOLESTERIN   For excess cholesterol, or for blood stabilization.
BLOOD, VOLUME
TRANSIENT ISCHEMIC ATTACK (TIA)   Stroke. Temporary interruption of blood flow to brain, often in carotid and vertebral arteries. } ]
Angiotensin-Converting Enzyme Inhibitor   Lowers blood pressure or stress regulation disease.
BLOOD, PHOSPHORUS - INORGANIC
GM345 SHU DI & HE SHOU WU   Tonify blood and kidney yin.
CHRONIC INFLAMMATION   From abnormal neutrophil function, anti inflammatory drugs, especially corticosteroids, poor blood supply, poor general nutrition. }

HYPOADRENIA   Weak adrenals can cause fatigue, depression, sleep disorders, low blood pressure, etc.
C-6 SPLEEN BLOOD ACTIVATOR/CAUSAL CHAIN THERAPY C-PLEX/FUTURE PLEX spleen meridian & funct.support,acute/chronic
BLOOD CLENZ (NV)   Combo remedy for cleansing blood, treats skin or hair problems.
BLOOD, SULFATE
ADVENTURINE   Stimulates muscle tissue + blood, brain stone, purifies mental + etheric bodies, centers you. crystal
GM195 SHEN FU TANG (NORTHERN AUSTRALIA & U.S.)   Shock, heart failure, improves blood and microcirculation, increases myocardial contraction, improves liver function and increases immunity. ]
GRAPES - RED & WHITE (ALR)   Can also id blood toxicity.
Fenugreek & Thyme / De congestant, Expectorant / Sunshine Tool Works
MEDORRHINUM   Suppressed gonorrhea, female pelvic inflammation dysfunction (PID), tonsils enlarged, nasal congestion, fatigue. @ ]
GM203 CANG ER SAN   Sinus congestion, sinusitis, allergic and perennial rhinitis. ]
AQUILARIA 22   For relieving congestion at the center, chronic intestinal infestations & constipation. Health Concerns
ASTRA 18 DIET   Promotes digestion & relieves congestion and bloating, disperses stagnant qi & phlegm, obesity. Health Concerns
Herb Pneu 2: Chest Congestion / Respiratory Tissue Support Formulas / Monastery of Herbs
KALI BICHROMICUM   Acts on the mucous membrane & uterus, relieves congestion, destruction, mineral.
HISTOPLASMOSIS 1   Fungus, can id systemic fungus or fungal immune weakness. ^
PENICILLIUM NOTATUER (ALR)   Can id systemic fungus or fungal immune weakness. ^
MIASM-FNG (DR)   Combo remedy for inherited disturbances caused by fungus, yeast sensitivity - fungus miasm. ^ ]
MILDEW   Can id systemic fungus or fungal immune weakness. ^ (ALR)
ASPERGILLUS FUMIGATUS (ALR)   Can id systemic fungus or fungal immune weakness. ^
4054;Narayani 33 VITILIGO 30C Homeo mixture leucoderma, difficult to treat ,useful as background along with single endocrine remedies

ASPERGILLUS NIDULANS (ALR)   Can id systemic fungus or fungal immune weakness. ^
FUNGUS INFECTIONS   } ^ ]
F THSH Thrush Mouth Fungus Formula / Monastery of Herbs ^
SACROMYCOSIS 3   Sugar yeast indicates allergy or systemic fungus infection. ^
HISTOPLASMOSIS 1   Fungus, can id systemic fungus or fungal immune weakness. ^
PENICILLIUM NOTATUER (ALR)   Can id systemic fungus or fungal immune weakness. ^
MILDEW   Can id systemic fungus or fungal immune weakness. ^ (ALR)
Capsicum & Garlic w, Parsley / Normalise Blood Pressure-Immune / Sunshine Tool Works
COLOSTRUM   Immune stimulant. VITAMIN
PROVOCATION OF AN INFLAMMATORY CELL OR IMMUNE RESPONSE BY UNKNOWN INFECTIOUS AGENT   Inflammation cascade from improper immune reactivity. }
BETA CAROTENE   Precursor of vitamin A, deficiency causes night blindness, psoriasis, immune dysfunction, retarded growth.
PLEO - Reb: Peyer's patches extract 4x   Immune stimulant, chronic inflammation bowels, leaky gut (colon intestine). ]
ZINC   For fidgety legs at night, weak sex interest, immune deficiency, nerve irritation, excess produces prostatitis. ]
ADENOIDS   Ids immune weakness or allergy if removed then the energetic disturbance must be corrected.
BIO IMMUNOZYME FORTE   Support for the immune function. BIOTICS E.N.B.
ASPERGILLUS FUMIGATUS (ALR)   Can id systemic fungus or fungal immune weakness. ^
CHROMOSOME 10 P   Immune deficiency, anemia, thryoid carcinoma, gliablastoma (cancer). ]
PASCOTOX MONO TABLETS   Lymphatic immune system. PASCOE NATURMEDIZIN
Barley Green / Whole food, Immune, Liver, Inflammation / Sunshine Tool Works
ASPERGILLUS NIDULANS (ALR)   Can id systemic fungus or fungal immune weakness. ^
LUPUS   Auto immune disease with sun sensitivity, ulcerations of skin, blotches.
Immunoguard intestinal (bowel, colon, intestine) immune complex/ with immunoglobulant concentrate FOS, GLA, Vitamin E, potassium ascorbate, Zinc citrate, lactobacillus bulgaricus/ Biocare UK ]
No 7 CONSTITUTION   Energetic treatment for rheumatic acidic constitution weak immune system @ ]

PEA POD (ALR)   Good for sulphur types and for allergic and immune sensitive patients.
BAPTISIA TINCTORIA   For intestinal (bowel, colon, intestine) toxemia, immune stimulant, counteracts inoculation (vaccines). \ ]
NAVY BEANS (ALR)   Can identify immune weakness, contains lectins that stimulate the T-cells (thymus). ]
PALATOL   For stabilizing the immune system.
GM261 YU PING FENG SAN   Frequent cough and colds (lung), low immunity, excessive sweating, immune stimulant, anhydrotic. ]
7231;Narayani 63 BACK UP ( booster) 30C Homeo mixture for blood, immune system, glands, bones
Tularemia Rabbit disease can be caught by immune compromised humans
IMMUNOGLOBULIN M   Formed in the early stages of any immune reaction, id's reaction to recent item.
THYROID, THYMUS, PARATHYROID (NV)   Sarcodes remedy for cleansing and rebuilding tissue in this area.
ECHINACEA TABLETS SPEZ.   Stabilizes the immune system. NETSMANN-Arzneimittel ]
No 8 CONSTITUTION   Energetic treatment for arthritic constitution weak immune system @]
GM163 BU ZHONG YI QI TANG   Tonic, digestive stimulant, elevates and tones weakened or prolapsed structures, stimulates and protects the immune system.
SWINE INFLUENZINUM   Swine influenza, can id unresolved viral immune def., treat with Viralfuge. #
IMMUPLEX   Immune System. Standard Process ]
COPPER OROTATE   Anti infection of immune system, fixes Fe (iron). MINERAL @#^* ]
ALKYROL   Shark liver oil, immune booster.
EXCESS PRODUCTION OF TOXINS, EXOTOXINS AND ENDOTOXINS - LIPO POLY SACCHARIDE   From unknown infectious source, LPS cascade from improper immune suppression. }
LYMPH - Sarcodes & nosodes combo   Id's problem with Lymph. D Nosode
BUFO ARENARUM VENOM COLORADO RIVER TOAD   Epilepsy, impotence, fright, menses, lymph.
LYMPH MERIDIAN   This acupuncture meridian has shown reactivity, possible blockage.
Lymphdiaral-Injektopas   PASCOE NATURMEDIZIN

LYMPHO LIQUITROPHIC (DR)   Combo remedy to assist in lymphatic repair and cleansing. ]
LYMPH, SPLEEN, MAMMARY (NV)   Breast. Sarcode remedy for cleansing and rebuilding tissue in this area. ]
LY Chi: Balances Chi of Lymphatic System / Tissue Support Formula / Monastery of Herbs
LYMPHOMA   Degeneration or cancer of the lymph.
PLEO - Nig: Aspergillus niger 5x   Lymph, tubercular, ulcerations, otitis media (ear), skin disorders. ^ ]
ZINC CADMIUM SULFIDE   Biological Warfare Variations
ALUMINUM METALLICUM   Acts on paralysis of intestinal (bowel, colon, intestine) muscles, dryness, whining, dread of evil, mineral. ]
760 METAL SEDATE   Ventilates the lungs, peaceful breathing, clears & calms throat & respiratory functions. Systemic Formulas \ Dragon Rising Chinese 5 Elements Products
FERRUM / FERROUS METALLICUM   Anemia with chill, vomiting, red face, thirst, cold, undigested food, mineral. ]
MERCURIUS CHLORIDE   Used in industry, ids mercury toxicity, mineral.
PLEO - Reb: Peyer's patches extract 4x   Immune stimulant, chronic inflammation bowels, leaky gut (colon intestine). ]
PLEO - Nig: Aspergillus niger 5x   Lymph, tubercular, ulcerations, otitis media (ear), skin disorders. ^ ]
FELINE LEUKEMIA VACCINE   Vaccine can produce blood toxicity in humans, exposition to cats.
TRIMETHYLAMINE   Chemical used in industry, ids toxic exposure.
FREON   CFCs, toxic element.
PREDNISONE   Synthetic steroids, mostly used in asthma (lung), ids toxic exposure. ]
MERCHLOROETHAMINE HYDRO   Chemical used in industry, ids toxic exposure.
GRASS, GOLDEN ROD (ALR)   Allergy sensitivity or toxic reaction, avoid and desensitize.
SELENIUM   Deficiency causes hair loss, cancer, neuritis (nerves), bleeding, toxicity, whiteness of hair, mineral. ]
SEA WEED   Ids iodine toxicity or deficiency, ids nutritional deficiency non specific. ]
PARATHIONE   Insecticide that produces cholinergic effects, ids toxic exposure that has not repaired.
SKATOL   Chemical occurring in the bowel (colon, intestine) as a result of toxic bowel, makes the foul odor, phenol. ]
MERCURIUS CHLORIDE   Used in industry, ids mercury toxicity, mineral.

GAS 3/homeopathic formula for allergy/Monastery of Herbs
IRIDIUM   Toxic element.
BARBITURATE INTOXICATION - BARBITURATE OVERDOSE   } DEDIC ]
OCTAMETHYL PYROPHOS   Used in industry, ids toxic exposure or sensitivity, use Addex N. 601 or Industriox N. 612. ]
GRAPES - RED & WHITE (ALR)   Can also id blood toxicity.
Epstien Barr virus of emotional dyscontrol and transmitted viral codition 3 # ]
HPVS 1/ formula for Herpes Simplex Virus no. 1/ Monastery of Herbs
VERRUCA   Type of planters wart, usually large with independent blood suppy, caused by virus. #
YELLOW FEVER VIRUS   Biological Warfare Variations # ]
WEST NILE VIRUS (2002) # ]
ACYCLOVIR   Herpes simplex 1and 2, Epstein Barr Virus (EBV), cellular enlargement, chronic fatigue, weak liver, nasopharyngeal carcinoma, Burkitts lypoma. ALO # ]
HEPATITIS D   Virus remedy, liver. Biological Warfare Variations # ]
POLO / formula for Polio Virus /Monastery of Herbs
LASSA FEVER VIRUS   Biological Warfare Variations # ]
ME-1 (DR)   Combo remedy for Herpes Epstein Barr Virus (EBV), cellular enlargement, chronic fatigue, weak liver, nasopharyngeal carcinoma, Burkitts lypoma. ] #
TRIFOLIUM PRATENSE   Red clover makes ptyalin (amylase in saliva), treatment for mumps (virus infecting parotid), stiff neck fatigue. \ # ]

Inflam mation	Degen eration	Toxicit y	Blocka ge	Deficie ncy	Sensiti vity	Imbala nce
		1				
		1				
		1		1		
		1				
		1				
		1				
		1				
		1				
		1				
				1		
				1		
1				1		
				1		

		1		1		
				1		
			1	1		
	1			1		
				1		
				1		
				1		
				1		
				1		
				1		
				1		
	1			1		
				1		
				1		
				1		
				1		
				1		
				1		
				1		
				1		
		1		1		

				1		
				1		
				1		
				1		
				1		
				1		
						1
						1
						1
				1		
				1		
				1		
				1		
				1		
		1				
						1
		1				
		1				
		1				
		1				

		1				
		1				
		1				
		1				
				1		
		1		1		
		1				
	1	1				
				1		
				1		
		1				1
		1				1
				1		
						1
						1
						1
				1		
				1		
				1	1	
		1				1
		1				1
						1

[illegible]

				1		
						1
				1		
				1		
				1		
		1		1		
		1		1		
				1		
		1				
		1				
				1		
				1		
				1		
				1		
				1		
				1		
				1		
				1		
		1				
					1	
					1	
					1	
					1	
					1	

[illegible]



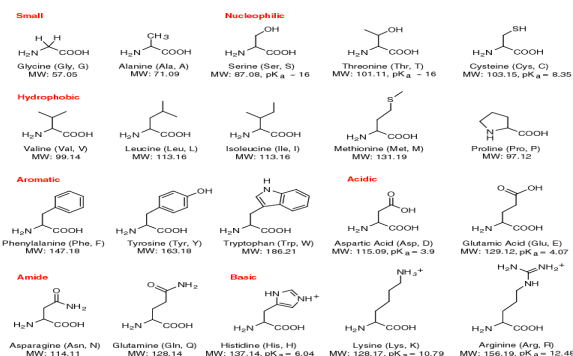
No	Value	Sub
288	127	Amino
918	115	Amino
792	108	Amino
5412	101	Amino
5403	50	Amino
6268	48	Amino
407	47	Amino
5402	46	Amino
237	44	Amino
5423	44	Amino
1361	126	Mineral
3197	125	Mineral
7418	111	Mineral
2809	106	Mineral
1174	103	Mineral
1155	102	Mineral

5378	<b>102</b>	Mineral
777	<b>50</b>	Mineral
5370	<b>50</b>	Mineral
8900	<b>50</b>	Mineral
1341	<b>49</b>	Mineral
2760	<b>49</b>	Mineral
1123	<b>48</b>	Mineral
1136	<b>47</b>	Mineral
8781	<b>47</b>	Mineral
8899	<b>47</b>	Mineral
1157	<b>46</b>	Mineral
5374	<b>44</b>	Mineral
1211	<b>39</b>	Mineral
6197	<b>38</b>	Mineral
5200	<b>126</b>	Nutri
10032	<b>107</b>	Nutri
8739	<b>105</b>	Nutri
9186	<b>104</b>	Nutri
1174	<b>103</b>	Nutri
8766	<b>101</b>	Nutri

9036	<b>101</b>	Nutri
1128	<b>50</b>	Nutri
4118	<b>47</b>	Nutri
8878	<b>45</b>	Nutri
10049	<b>45</b>	Nutri
3196	<b>41</b>	Nutri
4119	<b>32</b>	Nutri
6449	<b>123</b>	Vita
920	<b>115</b>	Vita
6166	<b>114</b>	Vita
3856	<b>112</b>	Vita
6473	<b>112</b>	Vita
7418	<b>111</b>	Vita
293	<b>110</b>	Vita
792	<b>108</b>	Vita
1530	<b>108</b>	Vita
6935	<b>106</b>	Vita
3864	<b>105</b>	Vita
8995	<b>103</b>	Vita
7047	<b>102</b>	Vita

591	<b>101</b>	Vita
1217	<b>101</b>	Vita
7040	<b>101</b>	Vita
3853	<b>100</b>	Vita
5181	<b>50</b>	Vita
7607	<b>50</b>	Vita
7764	<b>50</b>	Vita
8900	<b>50</b>	Vita
518	<b>49</b>	Vita
3011	<b>47</b>	Vita
7365	<b>47</b>	Vita
8781	<b>47</b>	Vita
8899	<b>47</b>	Vita
4167	<b>46</b>	Vita
5192	<b>46</b>	Vita
703	<b>46</b>	Vita
6444	<b>46</b>	Vita
1461	<b>44</b>	Vita
6165	<b>44</b>	Vita
6493	<b>42</b>	Vita

7320	<b>41</b>	Vita
2250	<b>36</b>	Vita
4119	<b>32</b>	Vita



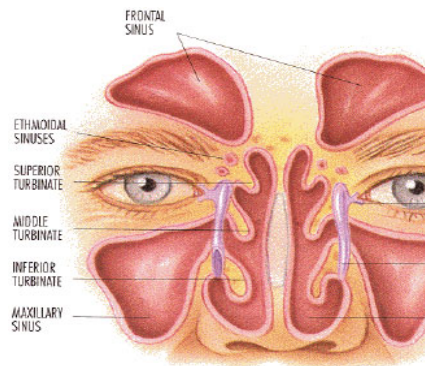
Description
RHODYMENIA PALMATA   Dulse, sea vegetable, for amino acid deficiency, weight loss , ids magnesium deficiency. \
AMINO LIQUITROPHIC (DR)   Supplies amino acids, used for malabsorption or vegetarians.
LIPOTROPIC FACTORS   Amino acids and vitamins for liver function.
PROLINE   Sulphur disorders. amino acid
SERINE   Carbohydrate energy conversion. amino acid
AMINOPHYLLINE   Chronic and acute broncho (lung) spasm. ALO ]
GLYCINE   Amino acid found in animal proteins, ids sugar muscle disturbance.
ISOLEUCINE   Emotional control, nerves. amino acid
CARNOSINE   Amino acid, ids RNA dysfunction in muscles. \
CITRULINE   Thinking. amino acid
ALUMINUM METALLICUM   Acts on paralysis of intestinal (bowel, colon, instestine) muscles, dryness, whining, dread of evil, mineral. ]
PHOSPHORUS   Fatty degeneration, bone disease, dread mental exertion, diarrhea, chest heavy. mineral ]
RENALS PLUS   Vitamins, minerals and herbs to support renal function and help with genital-urinary. BIOTICS E.N.B.
ANTI DIURETIC HORMONE   Pituitary hormone for water and mineral regulation.
POTASSIUM   Mineral nutrient needed for muscles, digestion, energy and thinking (brain), ids deficiency or excess. ]
KALI MURIATICUM (POTASSIUM CHLORIDE)   For eye, ear and throat, glands swollen, mineral. ]

IODINE   Thyroid function, energy, metabolism. mineral
SELENIUM   Deficiency causes hair loss, cancer, neuritis (nerves), bleeding, toxicity, whiteness of hair, mineral. ]
SODIUM   Depression, nerves, fatigue, digestion. mineral
Vyta-myn Complex (special stress formulation)/micro-coated vitamin and mineral supplement specifically for stress support/ Biocare UK
FERRUM / FERROUS METALLICUM   Anemia with chill, vomiting, red face, thirst, cold, undigested food, mineral. ]
POLONIUM   Radioactive heavy element found in basements and water. mineral
SILICA   Ids bone and connective tissue disorder, excess mucous, systemic weakness, mineral. ]
MERCURIUS CHLORIDE   Used in industry, ids mercury toxicity, mineral.
PROGLYCO-SP (K-13)   For sugar metabolism support, multi vitamin, mineral & glandular dietary supplement. APEX ENERGETICS
Refresh(natural energy)/blend of vitamins and minerals in base of natural freeze dried apricot, chronic infection, other illnesses/ Biocare UK
KALI BICHROMICUM   Acts on the mucous membrane & uterus, relieves congestion, destruction, mineral.
MANGANESE   Nerval and muscle disease. mineral \$ ]
BISMUTHUM OXIDATUM   Identifies with stomach infections leading to ulcer, mineral.
COPPER OROTATE   Anti infection of immune system, fixes Fe (iron). MINERAL @#^* ]
NUTRIMERE   Standard Process
M Nutrient 2: Muscle Cramps / Tissue Support Formula / Monastery of Herbs
Z-3 Zinc-Zyme / TERRAINZYME NUTRITIONALS / APEX ENERGETICS   Replenish zinc, infections, male function, chronic skin problems.
Nutricalm / Nervous System, Stress, Adrenal / Sunshine Tool Works
POTASSIUM   Mineral nutrient needed for muscles, digestion, energy and thinking (brain), ids deficiency or excess. ]
Z-30 Male Zyme Plus / TERRAINZYME NUTRITIONALS / APEX ENERGETICS   Broad nutritive pre/post menopause, hormones, emotions, energy.

PT08 pituitary support as herbal, nutritional and enzyme combination for pituitary gland/ Biocare UK
SEA WEED   Ids iodine toxicity or deficiency, ids nutritional deficiency non specific. ]
ECHINACEA WITH ASTRAGALUS   NUTRILITE
CHRONIC INFLAMMATION   From abnormal neutrophil function, anti inflammatory drugs, especially corticosteroids, poor blood supply, poor general nutrition. }
Occu Herb : Eye Nutrients / Respiratory Tissue Support Formulas / Monastery of Herbs
PHASEOLUS   Stimulates liver, gallbladder, promotes detox, overall nutrition stimulant, helps absorption and stimulation of nutrients, helps tissue to renew.
CHEWABLE E WITH LECITHIN   Vitamin E. NUTRILITE ]
FIGURE TONE   To lose weight. Natureplant - Ortomolecular Vitamin
B LIQUITROPHIC (DR)   Combo remedy supplying vitamin Bs, mental depression, pellagra. ]
COLOSTRUM   Immune stimulant. VITAMIN
BETA CAROTENE   Precursor of vitamin A, deficiency causes night blindness, psoriasis, immune dysfunction, retarded growth.
PROSTATE AID   Natureplant - Ortomolecular Vitamin
RENALS PLUS   Vitamins, minerals and herbs to support renal function and help with genital-urinary. BIOTICS E.N.B.
ROSE HIPS   Excellent supply of vitamin C, cold and flu remedy, good food. \ # ]
LIPOTROPIC FACTORS   Amino acids and vitamins for liver function.
BREWERS YEAST (ALR)   Contains lots of vitamins B.
GM205 TUO LI XIAO DU YIN   Otitis media, carbuncle, furuncle, strengthens the metabolism, increases vital energy and strengthens the immunity.
BIOFLAVINOIDS   Part of Vitamin C complex rich in citrus skin and rose hips, helps connective tissue.
Immunoguard intestinal (bowel, colon, intestine) immune complex/ with immunoglobulin concentrate FOS, GLA, Vitamin E, potassium ascorbate, Zinc citrate, lactobacillus bulgaricus/ Biocare UK ]
CTV VITAMIN C   Five sources of vitamin C with vitamin A, calcium, potassium and thymol iodide.

DL-METHIONINE S-METHYLSULFONIUM-VITAMIN U   Ubiquinone (coenzyme COQ10), ids oxygenation disorder, emotional suffocation. ]
ASCORBATE OXIDASE   Enzyme in vitamin C metabolism, ids vitamin C regulation disturbance or excess. ]
ACP VITAMIN ACP   Builds collagen, tissue integrity and strengthens shield system.
ANEURINE VITAMIN B1   Needed for carbohydrate metabolism, deficiency symptoms include: dermititis (red), diarrhea, depression. ]
INOSITOL VITAMIN B   Standard Process ]
RELAXINE   Multi for the neurological system, b vitamin complex. BIOTICS E.N.B. \$ ]
ELLAGIC ACID FORMULA   From red raspberry + graviola + green tea + selenium + vitamins, for health and cancer resistance.
Vyta-myn Complex (special stress formulation)/micro-coated vitamin and mineral supplement specifically for stress support/ Biocare UK
PYRIDOXAL   Indicates a vitamin B6 deficiency or excess, deficiency has no dreams, excess vivid nightmares. ]
(EP) FORMULA ADX 133   Allergy help with liver extract, vitamin A and selected B vitamins.
EMULSION 200 I.U.   Vitamin E emulsion in capsules. BIOTICS E.N.B.
PROGLYCO-SP (K-13)   For sugar metabolism support, multi vitamin, mineral & glandular dietary supplement. APEX ENERGETICS
Refresh(natural energy)/blend of vitamins and minerals in base of natural freeze dried apricot, chronic infection, other illnesses/ Biocare UK
Biotin   1 mg Vitamin H. SHRC KABR ]
MANGANESE VITAMIN B12   Standard Process ]
B-COMPLEX LIQUESCENCE (NV)   Combo remedy for vitamin B deficiency, ids deficiency. ]
DIET AID - 6   Natureplant - Ortomolecular Vitamin
PANTOTHENIC ACID-B5   Key vitamin for energy and metabolism.
ASCORBYL PALMITATE   Fat soluble vitamin C. VITAMIN
VITAMIN F 1200 mg.   Natureplant - Ortomolecular Vitamin

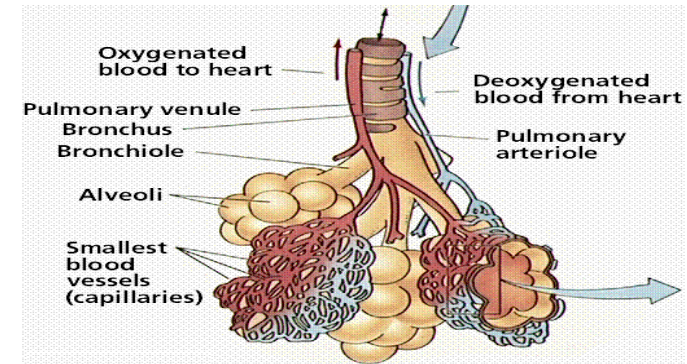
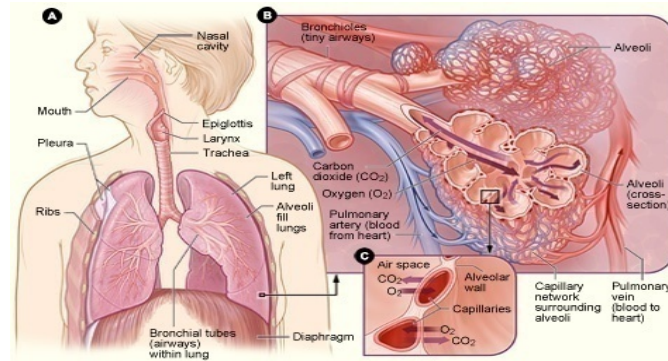
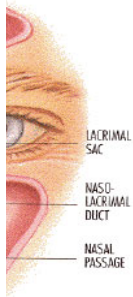
BIO B+C   Complex B with adjunction of vitamine C, glandulai, liver, hepatic, pancreatic lipase, lysine. BIOTICS E.N.B. ]
VITADUR N   dental isode
CHEWABLE E WITH LECITHIN   Vitamin E. NUTRILITE ]



No	Value	Sub
2815	112	Lung
7980	106	Lung
2627	105	Lung
7466	105	Lung
7987	103	Lung
5562	103	Lung
7211	103	Lung
950	101	Lung
1175	101	Lung
6339	101	Lung
5897	100	Lung
60	50	Lung
6940	50	Lung

1042	<b>49</b>	Lung
1869	<b>49</b>	Lung
367	<b>49</b>	Lung
5795	<b>48</b>	Lung
6268	<b>48</b>	Lung
10054	<b>48</b>	Lung
4367	<b>47</b>	Lung
7145	<b>47</b>	Lung
7985	<b>47</b>	Lung
6776	<b>46</b>	Lung
7221	<b>46</b>	Lung
76	<b>45</b>	Lung
1333	<b>45</b>	Lung
3199	<b>45</b>	Lung
7967	<b>45</b>	Lung
3658	<b>44</b>	Lung
216	<b>42</b>	Lung
7952	<b>41</b>	Lung
3878	<b>40</b>	Lung
5897	<b>100</b>	Pulmonary
6776	<b>46</b>	Pulmonary

2815	<b>112</b>	Respiratory
7980	<b>106</b>	Respiratory
7211	<b>103</b>	Respiratory
7987	<b>103</b>	Respiratory
9646	<b>100</b>	Respiratory
10054	<b>48</b>	Respiratory
7985	<b>47</b>	Respiratory
1333	<b>45</b>	Respiratory
7967	<b>45</b>	Respiratory
10049	<b>45</b>	Respiratory
7952	<b>41</b>	Respiratory
2083	<b>107</b>	Sinus
2604	<b>50</b>	Sinus
6933	<b>49</b>	Sinus
1362	<b>44</b>	Sinus
4039	<b>40</b>	Sinus



Description
ACUTE RESPIRATORY DISEASE - ARD   Undifferentiated, low O2 (lung), alkalosis, dyspnea, leucocytosis, fever, hypotension. ]
Ledum Spl   Respiratory tract (lung), kidney diseased, prostata (prostate0. PASCOE NATURMEDIZIN ]
NERVE SPINAL THORACIC (INTERCOSTAL)   Nerves of rib cage, ids pleurisy (lung) or rib cage pain. N sarcode \$ ]
CLEAR PHLEGM   Clears heat in gallbladder, for phlegm, profuse sputum, emphysema (lung), hyperactivity, ADD. Health Concerns ]
Prostapas Tropf.   Respiratory tract (lung), kidney diseased, prostata (prostate). PASCOE NATURMEDIZIN ]
BRONCHITIS, ACUTE   Lung } DEDIC ]
760 METAL SEDATE   Ventilates the lungs, peaceful breathing, clears & calms throat & respiratory functions. Systemic Formulas \ Dragon Rising Chinese 5 Elements Products
COUGH SYRUP (DR)   Combo remedy for coughs (lung). ]
PREDNISONONE   Synthetic steroids, mostly used in asthma (lung), ids toxic exposure. ]
PERTUSSIS - TETANUS (DPT) VACCINE   Lung, throat ALO @ ]
PULMONARY EMPHYSEMA   Lung condition, distension, elasticity loss, alveoli rupture, labored breathing, husky cough, impairs heart action } ]
CARDUUS MARIANUS   For liver and portal system (veins, capillaries), varicose veins, alcoholism, asthma (lung). \ ]
GM261 YU PING FENG SAN   Frequent cough and colds (lung), low immunity, excessive sweating, immune stimulant, anhidrotic. ]

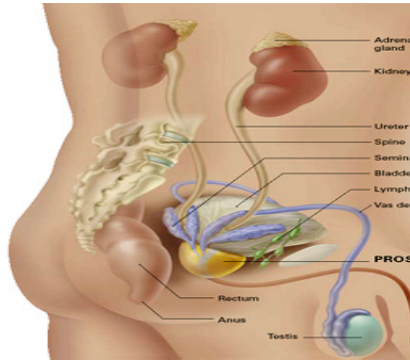
ANTI-ASTHMATIC (DR)   Asthma. Oriental combo remedy, regulates energy for lungs, chills and fever. \ ]
LUNG CARCINOMA   Cancer risk of lung, stop smoking.
ZINGIBER OFFICIN   Ginger, for digestion, morning sickness, respiration (lung), kidney failure, good food. \ ]
LUNG CANCER   }
AMINOPHYLLINE   Chronic and acute broncho (lung) spasm. ALO ]
Herb Pneu 2: Chest Congestion / Respiratory Tissue Support Formulas / Monastery of Herbs
ASTER - Zi wan   Eliminates phlegm and cough (lung), unblocks emotional release. \ Ayurvedic ]
1st BICUSPID LOWER RIGHT   TOOTH sarcode
Pascorenal Tropf.   Respiratory tract (lung), kidney diseased, prostata (prostate). PASCOE NATURMEDIZIN ]
SCOROSAN   Teucrium scorodonia-comp., tonic for the lungs, strengthening the body's defenses during pulmonary diseases. ]
NELSON LUNG REMEDY   Ayurvedic
CHOKER CHERRIES   For cough, bronchitis (lung), weak heart, > night, > lying down. \ ]
GYPSUM   Acts on respiratory (lung) system, treats fatigue and respiratory problems. ]
POPULUS   Balm of Gilead, for colds and laryngitis, hoarseness and cough (lung), for systemic detox, and to stimulate free radical fighters. ]
Rheuma-Pasc Tropf.   Respiratory tract (lung). PASCOE NATURMEDIZIN ]
BLATTA ORIENTALIS   Asthma, especially with bronchitis (lung), pus-like mucous.
MENTHA SPICATA   Stimulates lung, skin, digestion, clears other remedies. \
TUSSIFLORIN HUSSTENSTILLER   Respiratory tract (lung). PASCOE NATURMEDIZIN ]
DICHLOROFOLIC ACID   Affects kidney, lung energy.
PULMONARY EMPHYSEMA   Lung condition, distension, elasticity loss, alveoli rupture, labored breathing, husky cough, impairs heart action } ]
SCOROSAN   Teucrium scorodonia-comp., tonic for the lungs, strengthening the body's defenses during pulmonary diseases. ]

ACUTE RESPIRATORY DISEASE - ARD   Undifferentiated, low O2 (lung), alkalosis, dyspnea, leucocytosis, fever, hypotension. ]
Ledum Spl   Respiratory tract (lung), kidney diseased, prostata (prostate). PASCOE NATURMEDIZIN ]
760 METAL SEDATE   Ventilates the lungs, peaceful breathing, clears & calms throat & respiratory functions. Systemic Formulas \ Dragon Rising Chinese 5 Elements Products
Prostapas Tropf.   Respiratory tract (lung), kidney diseased, prostata (prostate). PASCOE NATURMEDIZIN ]
ANTI ALL 1: Anti-Respiratory Allergy formula no. 1, for inhalant allergies/Monastery of Herbs
Herb Pneu 2: Chest Congestion / Respiratory Tissue Support Formulas / Monastery of Herbs
Pascorenal Tropf.   Respiratory tract (lung), kidney diseased, prostata (prostate). PASCOE NATURMEDIZIN ]
GYPSUM   Acts on respiratory (lung) system, treats fatigue and respiratory problems. ]
Rheuma-Pasc Tropf.   Respiratory tract (lung). PASCOE NATURMEDIZIN ]
Occu Herb : Eye Nutrients / Respiratory Tissue Support Formulas / Monastery of Herbs
TUSSIFLORIN HUSSTENSTILLER   Respiratory tract (lung). PASCOE NATURMEDIZIN ]
SINUSITIS MAXILLARIS   Sarcode & nosode combo, ids problem.
Inferior Petrosal Sinuses   sarcode
GM203 CANG ER SAN   Sinus congestion, sinusitis, allergic and perennial rhinitis. ]
AURUM CHLORIDE NATRUM   Affects bones and glands of sinus & eyes, disgust with life, religious mania, defeated. ]
4039;Narayani 16 DRAWING 6X H omeo mixture for drawing morbid matter from sinus,ears, tonsils, rectum, uterus, carbuncles, fissures, gangarene,etc



[illegible]

[illegible]



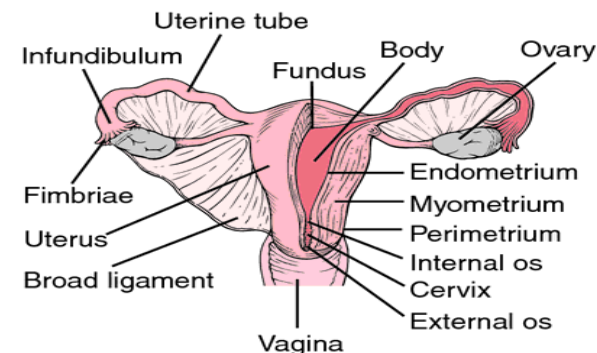
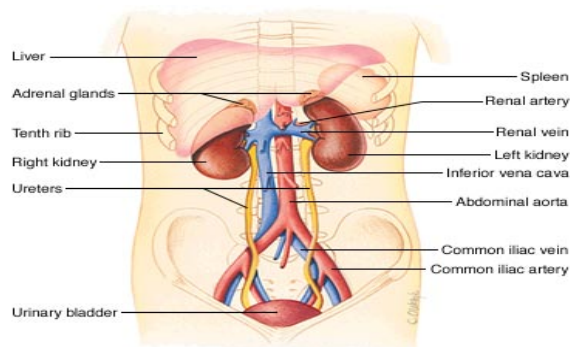
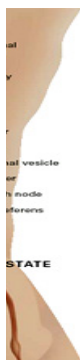
No	Value	Sub
48	129	Bladder
3605	118	Bladder
3482	114	Bladder
2158	113	Bladder
7130	110	Bladder
8868	105	Bladder
101	104	Bladder
6538	103	Bladder
5997	102	Bladder
5606	101	Bladder
9586	100	Bladder
5999	50	Bladder
77	49	Bladder

445	<b>49</b>	Bladder
5607	<b>49</b>	Bladder
6000	<b>49</b>	Bladder
6941	<b>49</b>	Bladder
7131	<b>49</b>	Bladder
9061	<b>49</b>	Bladder
6369	<b>48</b>	Bladder
150	<b>45</b>	Bladder
6825	<b>45</b>	Bladder
7553	<b>44</b>	Bladder
342	<b>39</b>	Bladder
107	<b>38</b>	Bladder
9888	<b>31</b>	Bladder
48	<b>129</b>	Kidney
2767	<b>120</b>	Kidney
8844	<b>116</b>	Kidney
3482	<b>114</b>	Kidney
2158	<b>113</b>	Kidney
2648	<b>110</b>	Kidney

7130	<b>110</b>	Kidney
7026	<b>109</b>	Kidney
7980	<b>106</b>	Kidney
8868	<b>105</b>	Kidney
101	<b>104</b>	Kidney
1722	<b>103</b>	Kidney
6538	<b>103</b>	Kidney
7987	<b>103</b>	Kidney
4328	<b>102</b>	Kidney
5997	<b>102</b>	Kidney
5606	<b>101</b>	Kidney
9772	<b>100</b>	Kidney
5999	<b>50</b>	Kidney
8618	<b>50</b>	Kidney
77	<b>49</b>	Kidney
131	<b>49</b>	Kidney
367	<b>49</b>	Kidney
445	<b>49</b>	Kidney
3105	<b>49</b>	Kidney
5607	<b>49</b>	Kidney
6000	<b>49</b>	Kidney

6941	<b>49</b>	Kidney
7131	<b>49</b>	Kidney
9061	<b>49</b>	Kidney
134	<b>48</b>	Kidney
6369	<b>48</b>	Kidney
6977	<b>47</b>	Kidney
7985	<b>47</b>	Kidney
8003	<b>47</b>	Kidney
150	<b>45</b>	Kidney
6825	<b>45</b>	Kidney
7553	<b>44</b>	Kidney
684	<b>42</b>	Kidney
3878	<b>40</b>	Kidney
342	<b>39</b>	Kidney
107	<b>38</b>	Kidney
2767	<b>120</b>	Kidney Stones
2158	<b>113</b>	Kidney Stones
8868	<b>105</b>	Kidney Stones
150	<b>45</b>	Kidney Stones
48	<b>129</b>	Ovaries
7145	<b>47</b>	Ovaries
48	<b>129</b>	Prostate

3605	<b>118</b>	Prostate
5016	<b>113</b>	Prostate
6473	<b>112</b>	Prostate
7130	<b>110</b>	Prostate
7980	<b>106</b>	Prostate
7987	<b>103</b>	Prostate
5606	<b>101</b>	Prostate
5551	<b>100</b>	Prostate
3807	<b>50</b>	Prostate
131	<b>49</b>	Prostate
7131	<b>49</b>	Prostate
7985	<b>47</b>	Prostate
7145	<b>47</b>	Testes
7130	<b>110</b>	Uterus
7131	<b>49</b>	Uterus
6079	<b>48</b>	Uterus
1157	<b>46</b>	Uterus
4039	<b>40</b>	Uterus
2105	<b>109</b>	Vagina
2645	<b>106</b>	Vagina
9888	<b>31</b>	Vagina



Description
BAROSMA BETULINA   For genito urinary system (kidney, bladder, urethra), prostate, ovaries. \ ]
VERTEBRAE SACRAL   sarcode \$ ]
MUSCLE TORSO UROGENITAL TRIANGLE   Muscles for urination (kidney, bladder, ureter, urethra) and ejaculation, ids sexual concern. sarcode \$ ]
CHROMOSOME 1 P   Cancer, hypothyroid, adrenal hyperplasia,kidney (bladder, ureter, urethra) stone. ]
CENTRAL INCISOR UPPER LEFT   TOOTH sarcode
METAPLASIA   Conversion/replacement of one cell type by different type, renal pelvis with calculi or kidney stone irritation, urinary bladder with chronic cystitis or schistosomiasis (worm). }
CORNSILK   Excellent for kidney and urinary (bladder, urethra) problems. \ ]
DETOX N.13   Kidney, Renal (bladder, urethra) toxins. GUNA s.r.l., MILANO ]
URETHRITIS   Kidney, bladder, ureter, urethra } ]
CYSTITIS   Inflammation of the bladder usually occurring secondarily to infections of associated organs (kidney, prostate, urethra). } DEDIC ]
BLADDER R-17/homeopathic formula allergy/APEX ENERGETICS
URINARY TRACT INFECTION - KIDNEY INFECTION   Kidney, bladder, ureter, urethra } ]
CUCURBITA - SQUASH   Seeds from squash, for backache (spine) and urination (kidney, bladder, urethra) problems. \ ]

PYRIDINE   Ids with protein metabolism problem, gout or kidney dysfunctionurinary (renal) diseases (kidney, bladder, urethra). ]
TONI-FANCONI SYNDROME - RENAL GLYCOSURIA   The lack of renal tubular (kidney, bladder, urethra) reabsorptive capacity. } DEDIC ]
KIDNEY DISORDERS   Kidney, bladder, ureter, urethra } ]
GM264 YIN CHEN HAO TANG   Liver -- Jaundice, cholagogue, choleric ; diuretic (kidney, bladder, urethra), laxative (bowel, colon, intestine). ]
CENTRAL INCISOR LOWER LEFT   TOOTH sarcode
Saw palmetto for genito urinary tract (kidney, bladder, urethra, ureter) disturbances/ Biocare UK ]
NITROFURANTOIN   Antibiotic, treat urinary (kidney, bladder, urethra) tract infections. ALO ]
GALIUM SPP   Acts on urinary system (kidney, bladder, urethra) as a diuretic, use with gravel or stones. \ ]
FASCIOLOPSIS CERCARIA   Parasite mostly in kidney bladder and pancreas. *
POCONEOL N.67   Urinary, diuretic (kidney, bladder, urethra). Dolisos, S.A. ]
TRITICUM   Remedy for urinary (renal) diseases (kidney, bladder, urethra), irritable bladder, cystitis, Sycosis miasm. \ ]
CONVOLVULUS ARVENSIS   Cardiac (heart) conditions, diuretic (kidney, bladder, urethra), laxative (bowel, colon, intestine). \ ]
Cystocele disease }
BAROSMA BETULINA   For genito urinary system (kidney, bladder, urethra), prostate, ovaries. \ ]
KIDNEY STONE PHOSPHATE
ATROPHY   From ischaemia eg. cerebral atrophy atherosclerosis, aortic aneurysm eroding bone, meningioma causing atrophy of overlying skull, hydronephrosis producing atrophy of the kidney parenchyma. }
MUSCLE TORSO UROGENITAL TRIANGLE   Muscles for urination (kidney, bladder, ureter, urethra) and ejaculation, ids sexual concern. sarcode \$ ]
CHROMOSOME 1 P   Cancer, hypothyroid, adrenal hyperplasia,kidney (bladder, ureter, urethra) stone. ]
Acid Phosphatase   Ids with bone disease or kidney disorder. Enzyme. ]

CENTRAL INCISOR UPPER LEFT   TOOTH sarcode
KS KIDNEY   Relieves body of excess water without loss of electrolytes, milder than K (see item 7025).
Ledum Spl   Respiratory tract (lung), kidney diseased, prostata (prostate0. PASCOE NATURMEDIZIN ]
METAPLASIA   Conversion/replacement of one cell type by different type, renal pelvis with calculi or kidney stone irritation, urinary bladder with chronic cystitis or schistosomiasis (worm). }
CORNSILK   Excellent for kidney and urinary (bladder, urethra) problems. \ ]
KIDNEY MERIDIAN   This acupuncture meridian has shown reactivity, possible blockage.
DETOX N.13   Kidney, Renal (bladder, urethra) toxins. GUNA s.r.l., MILANO ]
Prostapas Tropf.   Respiratory tract (lung), kidney diseased, prostata (prostate). PASCOE NATURMEDIZIN ]
ZUO GUI WAN   Nourishes the yin and enriches the kidney, reduces spiritual fear of embarrassment. \
URETHRITIS   Kidney, bladder, ureter, urethra } ]
CYSTITIS   Inflammation of the bladder usually occurring secondarily to infections of associated organs (kidney, prostate, urethra). } DEDIC ]
BLEND RI: kidney infection support/Monastery of Herbs
URINARY TRACT INFECTION - KIDNEY INFECTION   Kidney, bladder, ureter, urethra } ]
D-5 KDNY-DRN / DRAINAGE THERAPY D-PLEX & HERBALS / FUTUREPLEX   Stimulate/support kidney drainage.
CUCURBITA - SQUASH   Seeds from squash, for backache (spine) and urination (kidney, bladder, urethra) problems. \ ]
EUPATORIUM PURPUREUM   Albuminuria (kidney), diabetes (pancreas), prostatitis, impotence (prostate), sterility. \ ]
ZINGIBER OFFICIN   Ginger, for digestion, morning sickness, respiration (lung), kidney failure, good food. \ ]
PYRIDINE   Ids with protein metabolism problem, gout or kidney dysfunctionurinary (renal) diseases (kidney, bladder, urethra). ]
NEPHRITIS   For kidney irritation, inflammation or infection.
TONI-FANCONI SYNDROME - RENAL GLYCOSURIA   The lack of renal tubular (kidney, bladder, urethra) reabsorptive capacity. } DEDIC ]
KIDNEY DISORDERS   Kidney, bladder, ureter, urethra } ]

GM264 YIN CHEN HAO TANG   Liver -- Jaundice, cholagogue, cholaretic ; diuretic (kidney, bladder, urethra), laxative (bowel, colon, intestine). ]
CENTRAL INCISOR LOWER LEFT   TOOTH sarcode
Saw palmetto for genito urinary tract (kidney, bladder, urethra, ureter) disturbances/ Biocare UK ]
EGG WHITE POWDER   Rich in albumin (kidney), good food for protein and immuno deficiency, use before surgery. \ ]
NITROFURANTOIN   Antibiotic, treat urinary (kidney, bladder, urethra) tract infections. ALO ]
GM345 SHU DI & HE SHOU WU   Tonify blood and kidney yin.
Pascorenal Tropf.   Respiratory tract (lung), kidney diseased, prostata (prostate). PASCOE NATURMEDIZIN ]
ALETRIS SPL   Kidney diseased, prostata, endocrine system. PASCOE NATURMEDIZIN
GALIUM SPP   Acts on urinary system (kidney, bladder, urethra) as a diuretic, use with gravel or stones. \ ]
FASCIOLOPSIS CERCARIA   Parasite mostly in kidney bladder and pancreas. *
POCONEOL N.67   Urinary, diuretic (kidney, bladder, urethra). Dolisos, S.A. ]
PROTEINURIA (NV)   Combo remedy for albumenuria or proteinuria, treat kidney.
DICHLOROFOLIC ACID   Affects kidney, lung energy.
TRITICUM   Remedy for urinary (renal) diseases (kidney, bladder, urethra), irritable bladder, cystitis, Sycosis miasm. \ ]
CONVOLVULUS ARVENSIS   Cardiac (heart) conditions, diuretic (kidney, bladder, urethra), laxative (bowel, colon, intestine). \ ]
KIDNEY STONE PHOSPHATE
CHROMOSOME 1 P   Cancer, hypothyroid, adrenal hyperplasia,kidney (bladder, ureter, urethra) stone. ]
METAPLASIA   Conversion/replacement of one cell type by different type, renal pelvis with calculi or kidney stone irritation, urinary bladder with chronic cystitis or schistosomiasis (worm). }
GALIUM SPP   Acts on urinary system (kidney, bladder, urethra) as a diuretic, use with gravel or stones. \ ]
BAROSMA BETULINA   For genito urinary system (kidney, bladder, urethra), prostate, ovaries. \ ]
1st BICUSPID LOWER RIGHT   TOOTH sarcode
BAROSMA BETULINA   For genito urinary system (kidney, bladder, urethra), prostate, ovaries. \ ]

VERTEBRAE SACRAL   sarcode \$ ]
PROSTATE TLC - UNICITY   Exclusive proprietary.
PROSTATE AID   Natureplant - Ortomolecular Vitamin
CENTRAL INCISOR UPPER LEFT   TOOTH sarcode
Ledum Spl   Respiratory tract (lung), kidney diseased, prostata (prostate). PASCOE NATURMEDIZIN ]
Prostapas Tropf.   Respiratory tract (lung), kidney diseased, prostata (prostate). PASCOE NATURMEDIZIN ]
CYSTITIS   Inflammation of the bladder usually occurring secondarily to infections of associated organs (kidney, prostate, urethra). } DEDIC ]
PROSTATITIS - BENIGN PROSTATIC HYPERTROPHY (BPH)   Enlarged prostate or hormone disorder in women. ] } DEDIC ]
PYGEUM B-SITOSTEROLS   For prostate relief.
EUPATORIUM PURPUREUM   Albuminuria (kidney), diabetes (pancreas), prostatitis, impotence (prostate), sterility. \ ]
CENTRAL INCISOR LOWER LEFT   TOOTH sarcode
Pascorenal Tropf.   Respiratory tract (lung), kidney diseased, prostata (prostate). PASCOE NATURMEDIZIN ]
1st BICUSPID LOWER RIGHT   TOOTH sarcode
CENTRAL INCISOR UPPER LEFT   TOOTH sarcode
CENTRAL INCISOR LOWER LEFT   TOOTH sarcode
UTERUS DISEASE   }
KALI BICHROMICUM   Acts on the mucous membrane & uterus, relieves congestion, destruction, mineral.
4039;Narayani 16 DRAWING 6X H omeo mixture for drawing morbid matter from sinus,ears, tonsils, rectum, uterus, carbuncles, fissures, gangarene,etc
TRICHOMONAS VAGINALIS   Flagylated protozoa parasite, common after surgery or pregnancy, asymptomatic in males. *]
NERVE SPINAL LUMBAR (VAGINAL)   Supplies the vaginal area, ids nerve problem to vagina. N sarcode \$ ]
Cystocele disease }

Inflam mation	Degen eration	Toxicit y	Blocka ge	Deficie ncy	Sensiti vity	Imbala nce
				1		
				1		
				1		
				1		
				1		
				1		
				1		
			1	1		
				1		
			1	1		
			1	1		
				1		
				1		

			1			
				1		
						1
		1				
				1		
				1		
				1		
			1	1		
				1		
				1		
				1		
				1		
						1
						1
				1		
		1	1			
			1	1		
				1		
				1		

			1	1		
				1		
				1		
				1		
			1	1		
				1		
				1		
				1		
				1		
				1		
						1
				1		
						1
						1
1		1	1			1
				1		
				1		
1				1		
				1		
			1	1		
			1	1		

		1		1		
				1		
				1		
				1	1	
				1	1	
				1		
				1		
				1		
				1		
				1		
				1		
				1		
				1		
				1		
				1		
				1		
		1		1		1
			1	1		
			1	1		
			1	1		
				1		
		1				
				1		

				1		
				1		
				1		
			1	1		
						1
				1		
						1
						1
				1		
				1		
				1		
				1		
		1				
				1		
				1		
				1		
				1		
				1		
				1		
				1		
				1		
		1				
		1				
		1				